

BURJ BINGHATTI
JACOB & CO
RESIDENCES



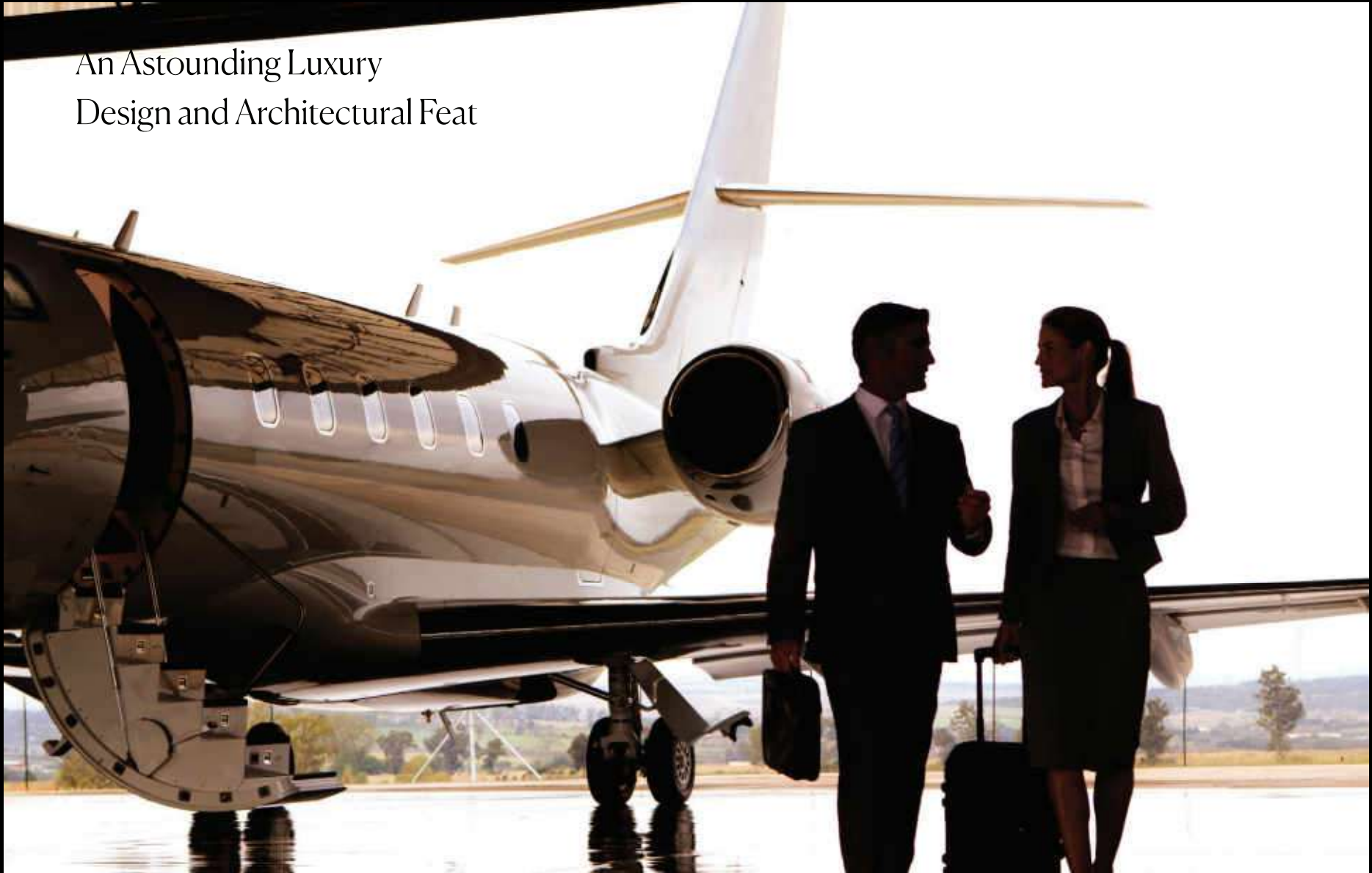
An Iconic Skyscraper Sets
to Break a World Record

BURJ BINGHATTI
JACOB & CO
RESIDENCES



BURJ BINGHATTI
JACOB & CO
RESIDENCES

An Astounding Luxury
Design and Architectural Feat



BURJ BINGHATTI
JACOB & CO
RESIDENCES

Inspired by
the Impossible



BURJ BINGHATTI
JACOB & CO
RESIDENCES

For Those
Who Defy Convention



BURJ BINGHATTI
JACOB & CO
RESIDENCES



Live Amidst
the Clouds

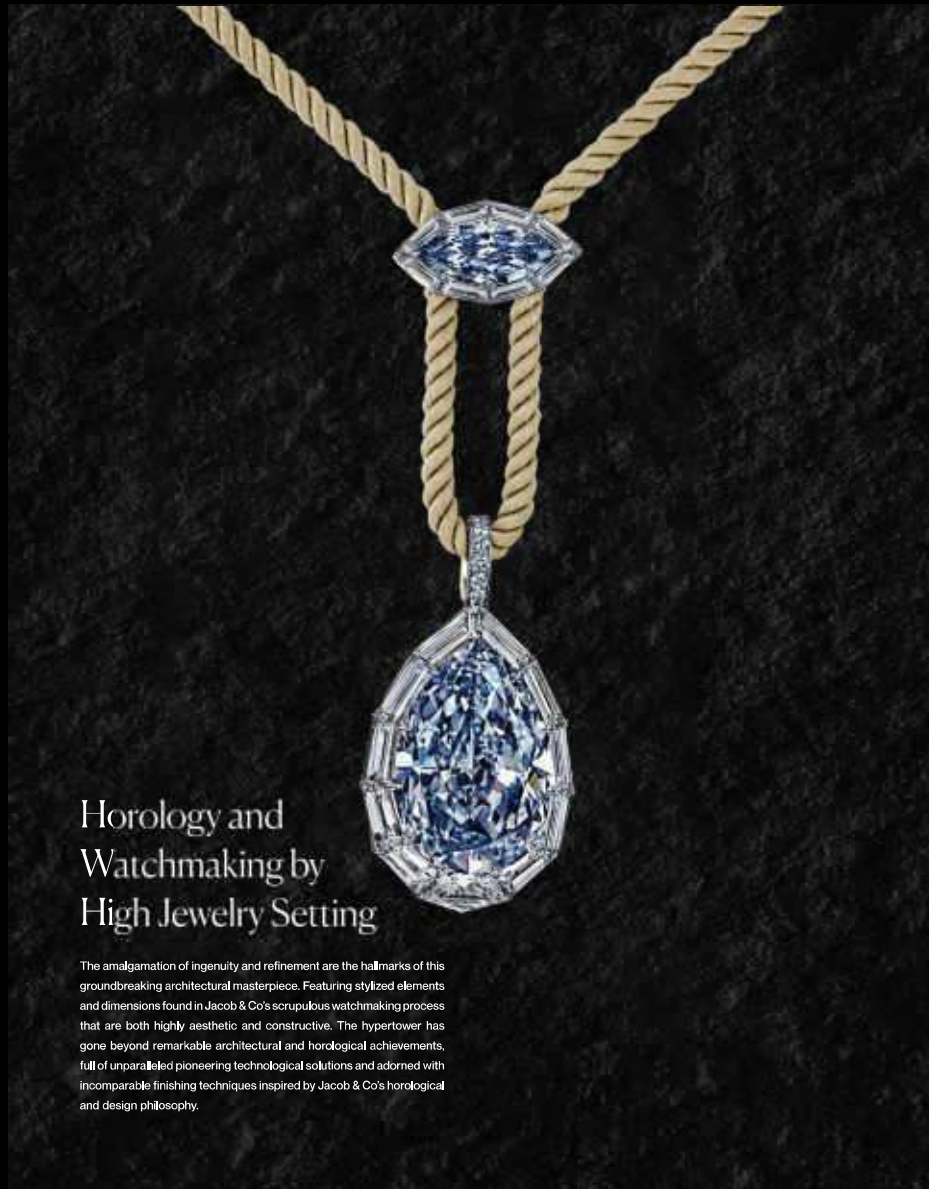
Imagine living amidst the clouds at the peak of one of the tallest hypertowers in the world. Break boundaries, and challenge the unthinkable. Burj Bhatti Jacob & Co Residences utterly redefines the notion of a luxuriant contemporary lifestyle in the metropolis, offering impeccable, high-end bespoke living exclusively fashioned for the elite.

DESIGN CONCEPT

The Clouds

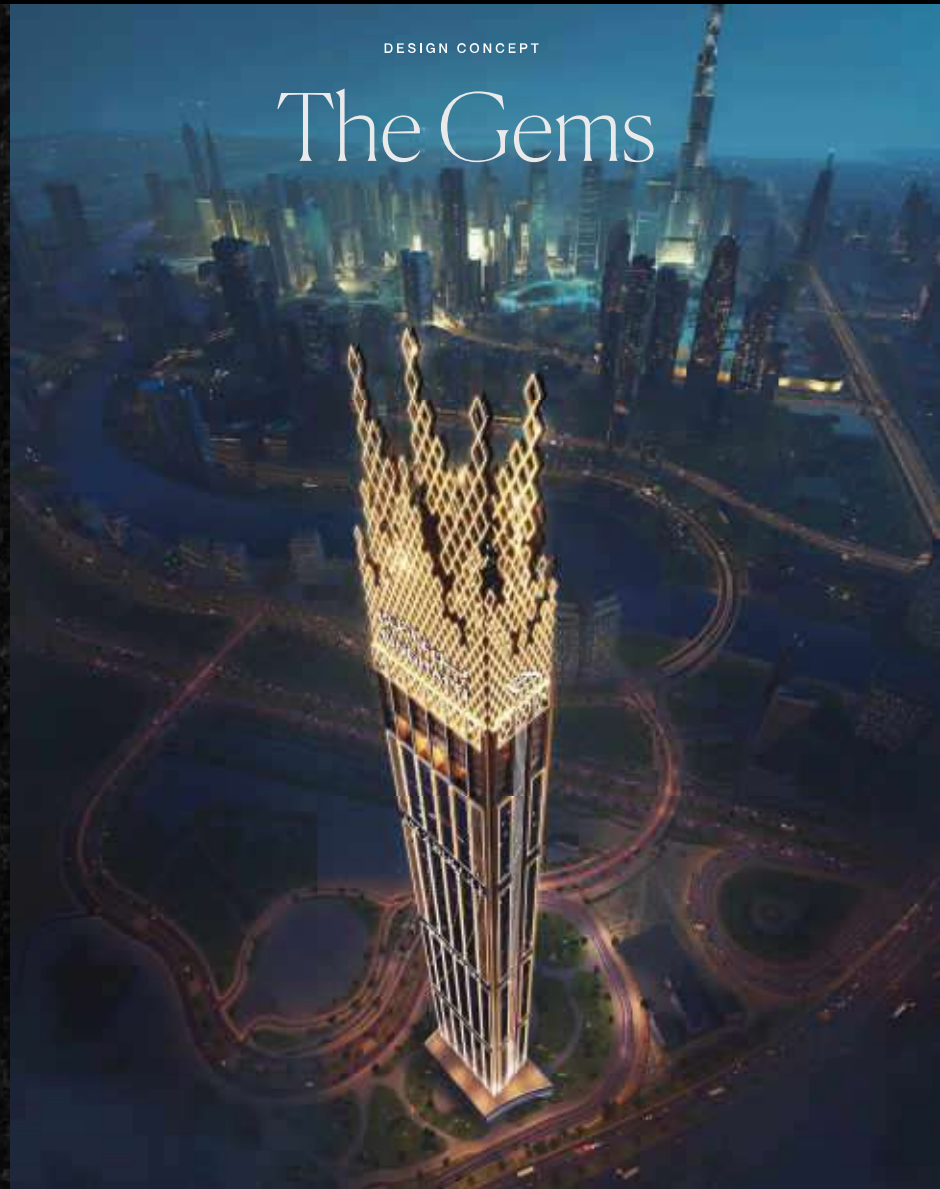


BURJ BINGHATTI
JACOB & CO
RESIDENCES



Horology and
Watchmaking by
High Jewelry Setting

The amalgamation of ingenuity and refinement are the hallmarks of this groundbreaking architectural masterpiece. Featuring stylized elements and dimensions found in Jacob & Co's scrupulous watchmaking process that are both highly aesthetic and constructive. The hypertower has gone beyond remarkable architectural and horological achievements, full of unparalleled pioneering technological solutions and adorned with incomparable finishing techniques inspired by Jacob & Co's horological and design philosophy.



DESIGN CONCEPT

The Gems

BURJ BINGHATTI
JACOB & CO
RESIDENCES

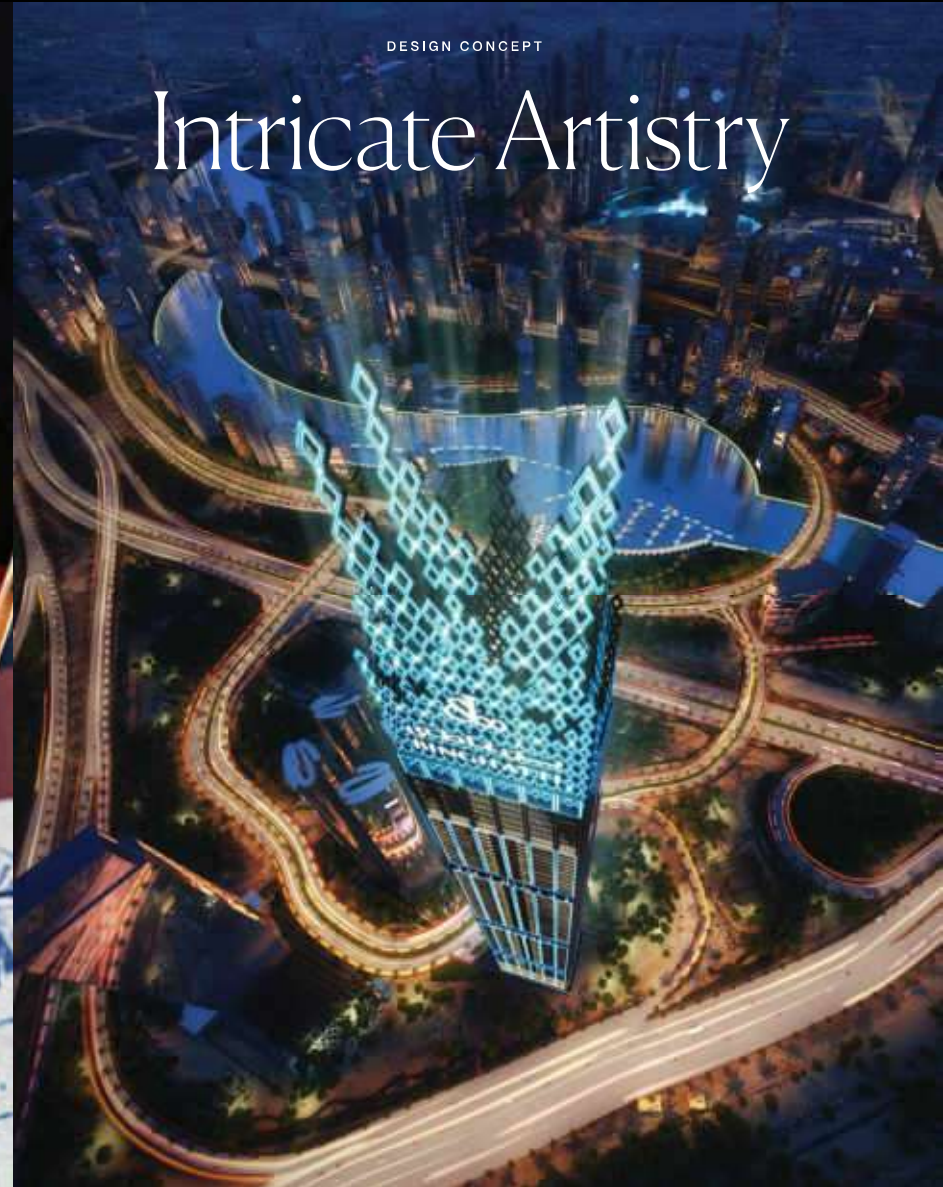
Unrivaled
Opulence

The crown stands as the culmination of the Bingham and Jacob & Co signature architectural and horological code, the emblem and purest representation of the brands. The crown is found at the highest altitude of the hypertower illuminating unrivaled opulence with its voluptuous and fascinating constructive display of the iconic and signature Jacob diamonds.



DESIGN CONCEPT

Intricate Artistry



BURJ BINGHATTI
JACOB & CO
RESIDENCES



Inspired by
the Impossible

Brimming with radical and profound ideas, breaking new ground in high-end architectural and horological spheres, Bingham and Jacob & Co unite to transcend boundaries never believed possible - an astounding luxury design and architectural feat the world has never seen before.

DESIGN CONCEPT

The Impossible



BURJ BINGHATTI
JACOB & CO
RESIDENCES



BURJ BINGHATTI
JACOB & CO
RESIDENCES

About The Project

BURJ BINGHATTI
JACOB & CO
RESIDENCES

ABOUT THE PROJECT

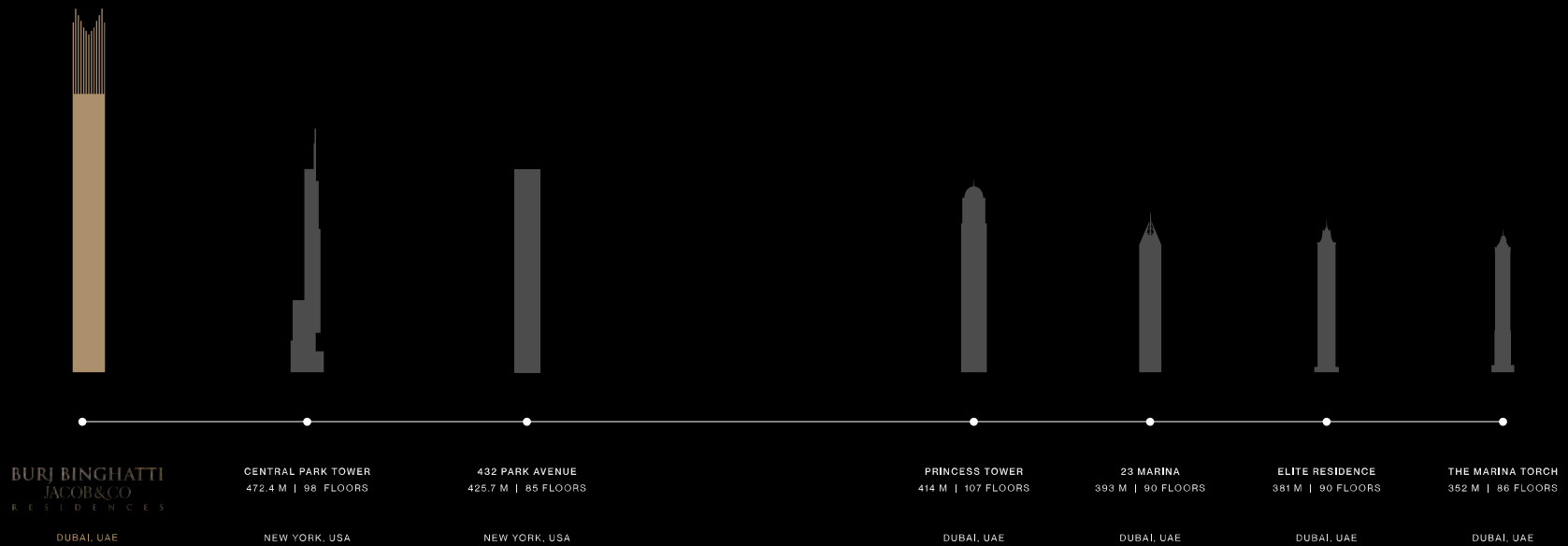
The Map



BURJ BINGHATTI JACOB & CO RESIDENCES

ABOUT THE PROJECT

An Iconic Skyscraper Sets to Break a World Record



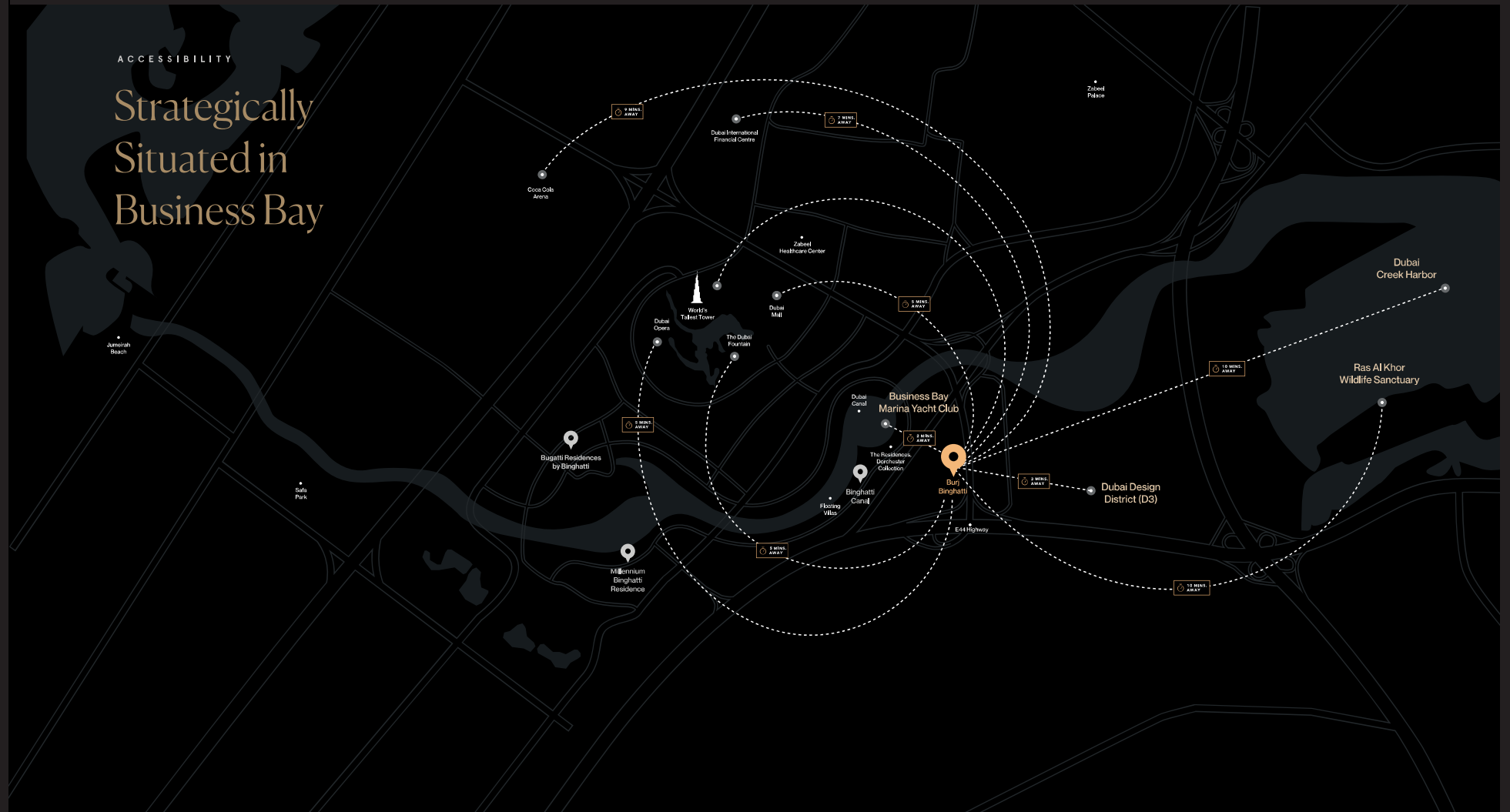
Drawings are not to scale and building height is subject to government and local authority approval.

Drawings are not to scale and building height is subject to government and local authority approval.

BURJ BINGHATTI JACOB & CO RESIDENCES

ACCESSIBILITY

Strategically
Situated in
Business Bay

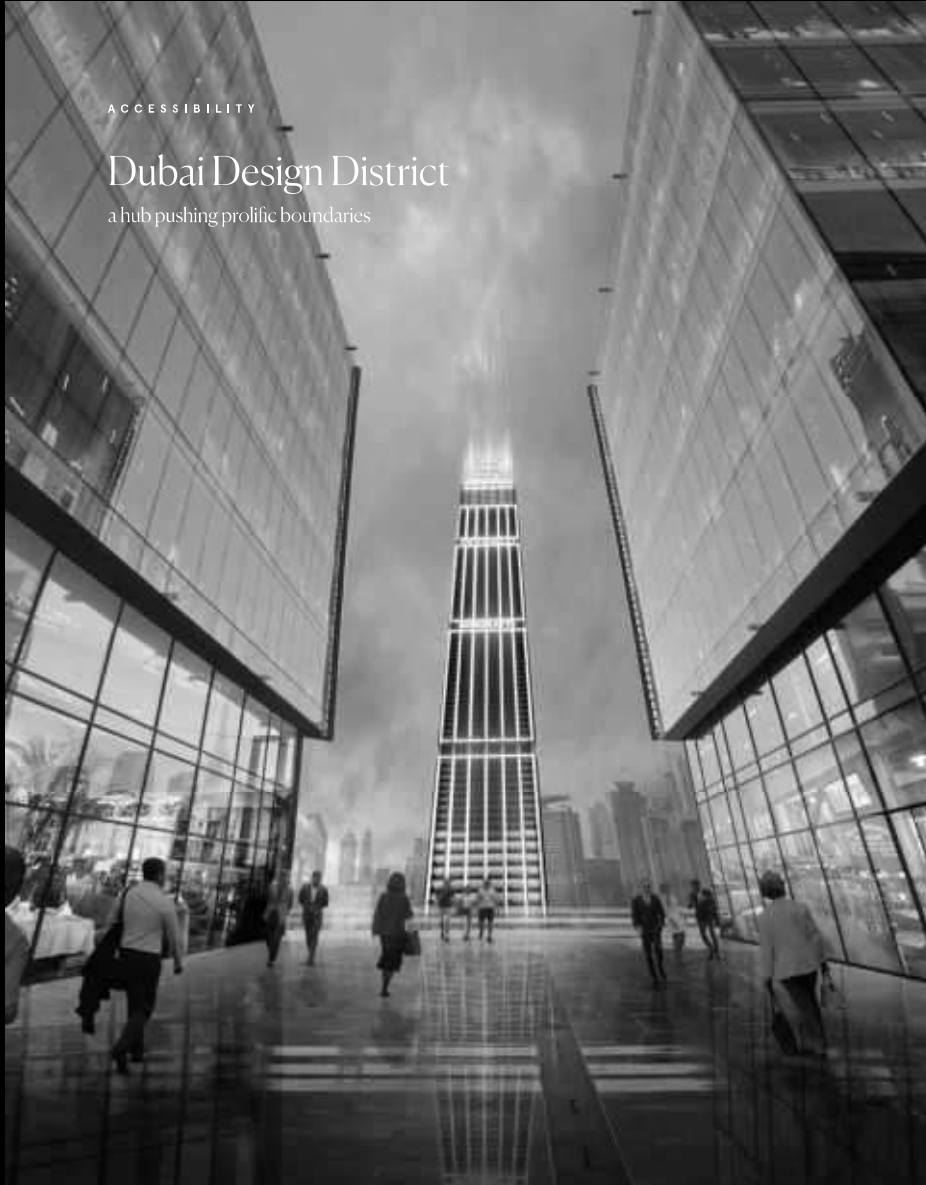


BURJ BINGHATTI
JACOB & CO
RESIDENCES

ACCESSIBILITY

Dubai Design District

a hub pushing prolific boundaries



ACCESSIBILITY

Dubai Creek Harbor

a boundless sumptuous community



BURJ BINGHATTI
JACOB & CO
RESIDENCES

ACCESSIBILITY

Business Bay
Marina Yacht Club

indulgence in grand
metropolitan exuberant living



BURJ BINGHATTI
JACOB & CO
RESIDENCES

ABOUT THE PROJECT

Project Facts

Property Type

Residential Skyscraper

Unit Type

Exclusive Villas

Sapphire Villa (2.5 Bedroom)

Emerald Villa (2 Bedroom)

Ruby Villa (3 Bedroom)

Sky Mansions

Diamond Sky Mansion (4 Bedroom)

Fleur De Jardin Sky Mansion (6 Bedroom)

Sky Penthouses

Astronomia Sky Penthouse

The Billionaire Sky Penthouse



BURJ BINGHATTI JACOB & CO RESIDENCES

ABOUT THE PROJECT

Stating Features



CONCIERGE
SERVICE



CHAUFFEUR
SERVICE



BODYGUARD
SERVICE



BUTLER
SERVICE



TITANIUM
ACCESS CARD



PARKING
ACCESS CARD



LOBBY
LOUNGE



PRIVATE
CHEF SERVICE



INFINITY
POOL



FOOD &
BEVERAGE



SPA
SERVICE



DAYCARE
SERVICE



HOUSEKEEPING /
CLEANING SERVICE



GYMNASIUM &
TRAINING SERVICES

*Some of the above features are à la carte services.

All stated services whether in relation to the building, common areas or individual units are subject to government and local authority approvals.

BURJ BINGHATTI
JACOB & CO
RESIDENCES

Design Details

BURJ BINGHATTI
JACOB & CO
RESIDENCES



BURJ BINGHATTI
JACOB & CO
RESIDENCES

DESIGN DETAILS

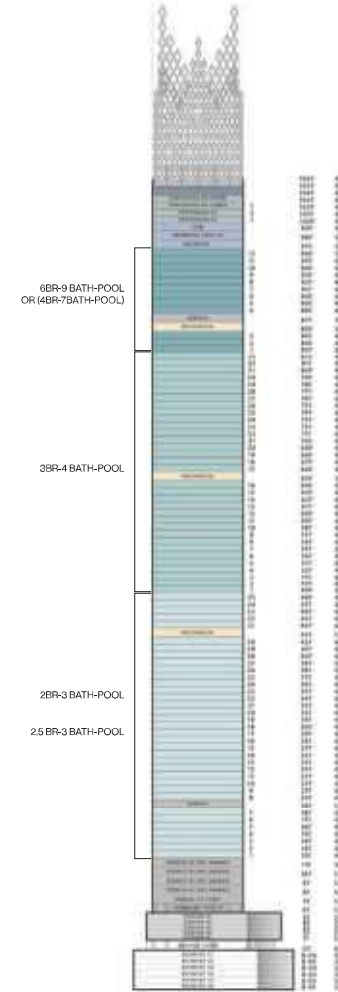
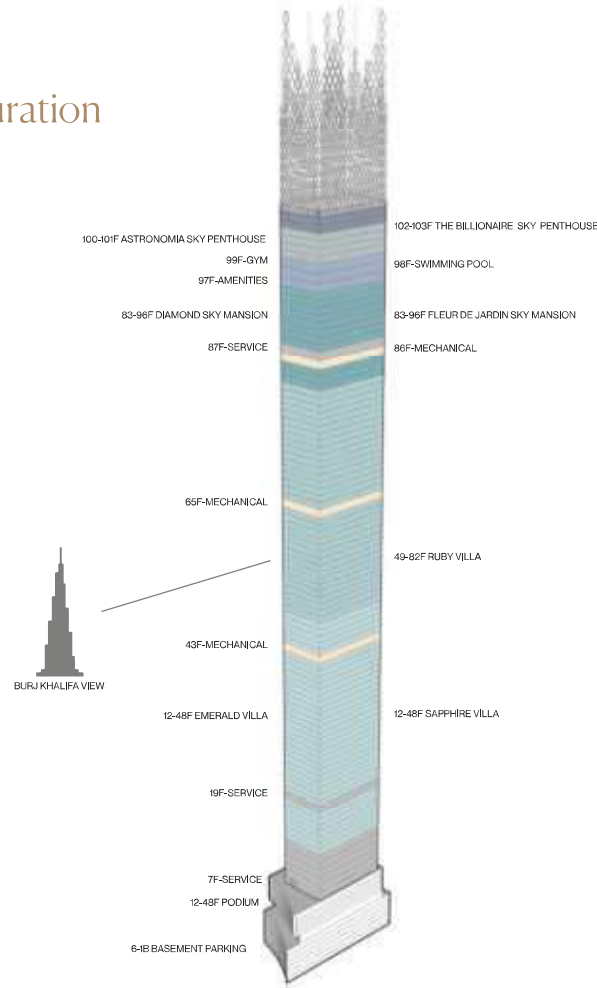
Exclusively Fashioned
for the Elite



BURJ BINGHATTI JACOB & CO RESIDENCES

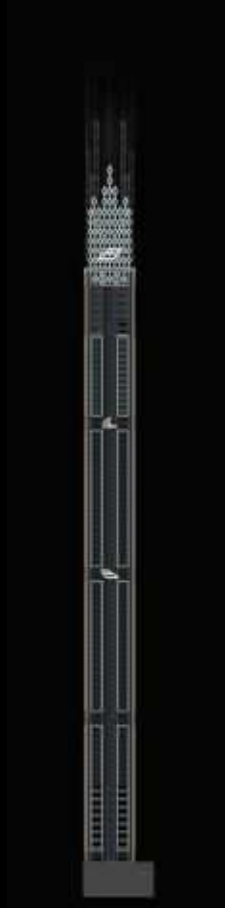
DESIGN DETAILS

Project Configuration



BURJ BINGHATTI
JACOB & CO
RESIDENCES

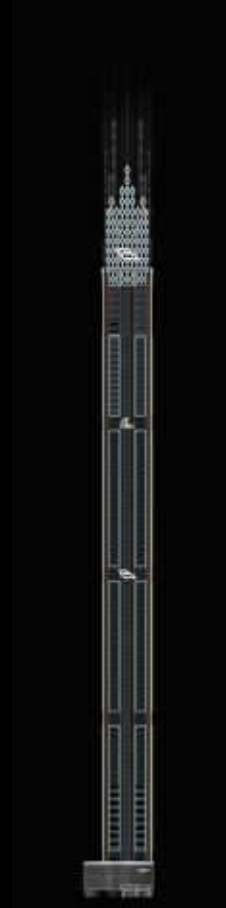
BURJ BINGHATTI
JACOB & CO
RESIDENCES



REAR ELEVATION



RIGHT ELEVATION



FRONT ELEVATION



LEFT ELEVATION

Drawings are not to scale and building height is subject to government and local authority approvals and we reserve the right to make any revisions whatsoever including for aesthetic purposes.

BURJ BINGHATTI
JACOB & CO
RESIDENCES

DESIGN DETAILS

The Relentless
Quest for Greatness



BURJ BINGHATTI
JACOB & CO
RESIDENCES

DESIGN DETAILS

Unmatched
Architectural Prowess



BURJ BINGHATTI
JACOB & CO
RESIDENCES

DESIGN DETAILS
THE LOBBY



DESIGN DETAILS

BURJ BINGHATTI
JACOB & CO
RESIDENCES

DESIGN DETAILS
THE LOBBY



BURJ BINGHATTI
JACOB & CO
RESIDENCES

DESIGN DETAILS
THE LOBBY



BURJ BINGHATTI
JACOB & CO
RESIDENCES

DESIGN DETAILS
THE LOBBY



BURJ BINGHATTI
JACOB & CO
RESIDENCES

DESIGN DETAILS
THE POOL



BURJ BINGHATTI
JACOB & CO
RESIDENCES

DESIGN DETAILS
THE POOL



BURJ BINGHATTI
JACOB & CO
RESIDENCES

DESIGN DETAILS

THE FACADE



BURJ BINGHATTI
JACOB & CO
RESIDENCES

INSPIRED BY THE CRAFTSMANSHIP OF

Emerald

Exclusive two-bedroom residences on a quarter floor.

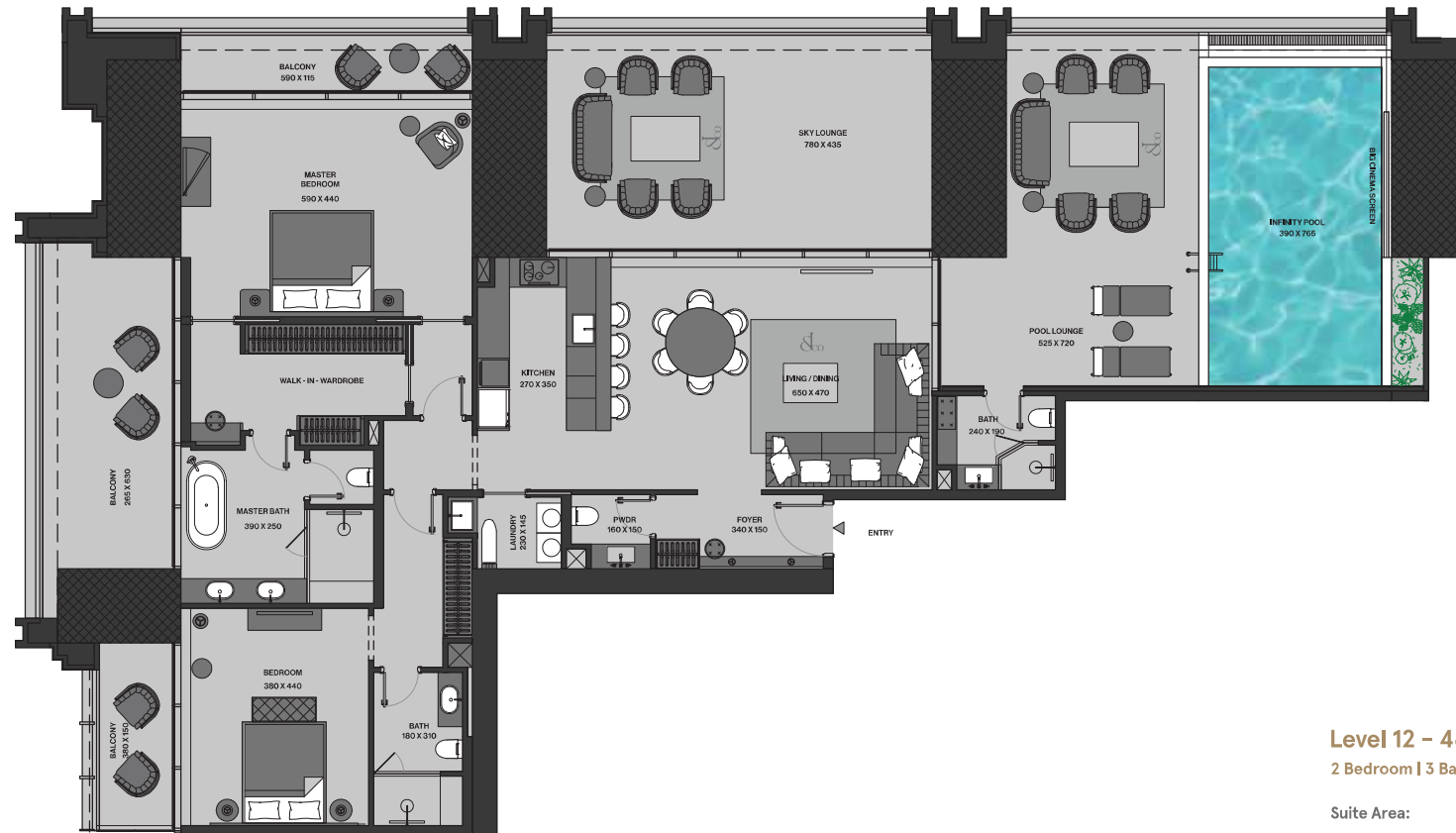
The Emerald Villa is an exquisite collection of two luxuriant bedroom units, each offering a unique perspective on the stunning cityscape of Dubai. Nestled within this premium collection, you'll find two-unit types, each boasting its own breathtaking views. The first unit type treats you to the awe-inspiring sight of downtown Dubai and the iconic Burj Khalifa, while the second type provides a panoramic vista of the mesmerizing Dubai skyline and the waters of the Creek Harbor. With spacious interiors and luxurious amenities, Emerald Villa offers an unparalleled living experience in the heart of one of the world's most vibrant cities.



BURJ BINGHATTI JACOB & CO RESIDENCES

DESIGN CONCEPT

Emerald Villa



Level 12 - 48

2 Bedroom | 3 Bathroom | Infinity Pool

Suite Area: 1,738 (SQ.FT)

Terrace & Pool Area: 1,599 (SQ.FT)

Total Area: 3,337 (SQ.FT)

Parking No: 2

Disclaimer: 1. All stated dimensions and services whether in relation to the building, common areas or individual units are subject to government and local authority approvals. Final dimensions and services will be stated in your sales and purchase agreement. 2. All stated dimensions are measured to finished floors and include all fixtures and construction tolerances. 3. All dimensions have been provided by our consultant architect. 4. All stated dimensions and drawings are approximate. It is intended to indicate design without being a contract. 5. Actual floor area may vary from the stated area. Drawings are not to scale. The Developer reserves the right to make any necessary adjustments including for aesthetic purposes. 6. Calculation of area is measured on the area bounded by the center line of demarcation or partition walls measuring area from center line, the exterior face of all exterior walls, and the exterior face of the service shaft including the adjoining unit. 7. Calculation of building area is measured on the area bounded by the center line of demarcation or partition walls measuring area from center line, the exterior face of all exterior walls, and the exterior face of the service shaft and the exterior face of the adjoining building. 8. The area is measured at typical floor in the building. 9. Dimensions may vary in size depending on the floor level. 10. For each unit type, unit size and details might be different and your sales and purchase agreement will contain the actual size of each specific unit.



















DESIGN DETAILS

EMERALD VILLA



BURJ BINGHATTI
JACOB & CO
RESIDENCES



BURJ BINGHATTI
JACOB & CO
RESIDENCES

INSPIRED BY THE CRAFTSMANSHIP OF

Sapphire

High-end dual bedroom suites on a quarter floor
(with exclusive study and storage room)

The Sapphire Villa is an exceptional collection of two-bedroom luxury units that have been thoughtfully designed to meet every need. With spacious interiors that include a study/maid room and an additional storage area, the Sapphire Wing offers a truly premium living experience.

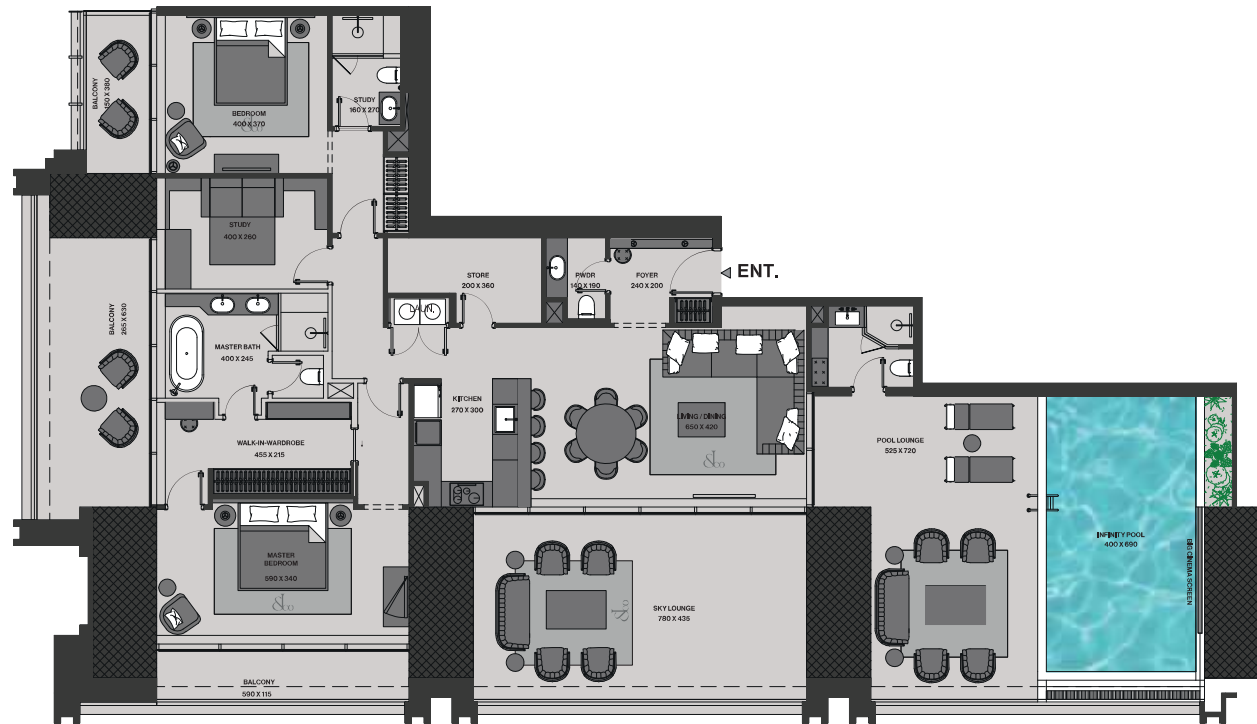
Within this exclusive collection, you'll find two-unit types, each offering a unique perspective on the magnificent cityscape of Dubai. The first unit type boasts a stunning side view of downtown Dubai and the iconic Burj Khalifa, while the second type treats you to the Creek Harbor and the Dubai Design District.



BURJ BINGHATTI JACOB & CO RESIDENCES

DESIGN CONCEPT

Sapphire Villa



Level 12 - 48

2.5 Bedroom | 3 Bathroom | Infinity Pool

Suite Area: 1,732 (SQ.FT)

Terrace & Pool Area: 1,602 (SQ.FT)

Total Area: 3,335 (SQ.FT)

Parking No: 2

Disclaimer: 1. All stated dimensions and services whether in relation to the building, services area or individual units are subject to government and local authority approvals. Final dimensions and services of the stated in your sales and purchase agreement. 2. All room dimensions are measured to internal dimensions and exclude all fixtures and furniture installations. 3. All dimensions are based on the standard conditions. 4. All rooms, dimensions and drawings are approximate. Information is subject to change without notice. 5. Actual floor area may vary from the stated area. Drawings are not to scale. The Developer reserves the right to make any necessary amendments including for amenities purposes. 6. Calculation of area area is measured as the area bounded by the service line of drawing or partition wall measuring one unit from another unit, the external face of all service walls and the external face of the service walls of the adjoining unit. 7. Calculation of balcony area is measured as the area bounded by the service line of drawing or partition wall measuring one unit from another unit, the external face of the service wall and the external face of the adjoining building. 8. The area is measured at ground floor in the building. 9. Dimensions may vary in size depending on the floor level. 10. The exact unit type, unit size and details might be different and you shall read purchase agreement to confirm the actual size of each specific unit.

إشعار: 1. جميع الأبعاد والخدمات سواء في العلاقة مع المبنى، أو الخدمات أو الوحدات الفردية هي خاضعة للموافقة من الجهات الحكومية والسلطات المحلية. الأبعاد والخدمات النهائية للوحدات المبينة في وثائق البيع والشراء هي التي ستطبق. 2. جميع أبعاد الغرف هي مقاسة إلى الأبعاد الداخلية وتتجاهل جميع الأثاث والتركيبات. 3. جميع الأبعاد هي مقاسة على أساس الشروط القياسية. 4. جميع الأبعاد تقريبية. المعلومات هي تقريبية وقد تتغير دون إشعار مسبق. 5. المساحة الفعلية للغرفة قد تختلف عن المساحة المبينة في المخططات. 6. جميع الأبعاد والمساحات والرسومات هي تقريبية. المعلومات هي تقريبية وقد تتغير دون إشعار مسبق. 7. المعلومات هي تقريبية وقد تتغير دون إشعار مسبق. 8. المساحة الفعلية للغرفة قد تختلف عن المساحة المبينة في المخططات. 9. المساحة الفعلية للغرفة قد تختلف عن المساحة المبينة في المخططات. 10. الأبعاد قد تختلف باختلاف الطابق. 11. الأبعاد قد تختلف باختلاف الطابق. 12. الأبعاد قد تختلف باختلاف الطابق. 13. الأبعاد قد تختلف باختلاف الطابق. 14. الأبعاد قد تختلف باختلاف الطابق. 15. الأبعاد قد تختلف باختلاف الطابق. 16. الأبعاد قد تختلف باختلاف الطابق. 17. الأبعاد قد تختلف باختلاف الطابق. 18. الأبعاد قد تختلف باختلاف الطابق. 19. الأبعاد قد تختلف باختلاف الطابق. 20. الأبعاد قد تختلف باختلاف الطابق.

















BURJ BINGHATTI
JACOB & CO
RESIDENCES

INSPIRED BY THE CRAFTSMANSHIP OF

Ruby

Deluxe quarter-floor three-bedroom residences.

The Ruby Villa is a truly exceptional collection of three-bedroom luxury units that offer an unrivaled living experience in the heart of Dubai. With spacious interiors and premium amenities, the Ruby Villa is designed to meet the needs of the most discerning individuals.

This exclusive collection comprises four unique unit types, each offering its own breathtaking views of the stunning cityscape. The first unit type provides a mesmerizing view of downtown Dubai and the iconic Burj Khalifa, while the second unit type offers panoramic vistas of the serene waters of the Creek Harbor and the vibrant Dubai Design District.

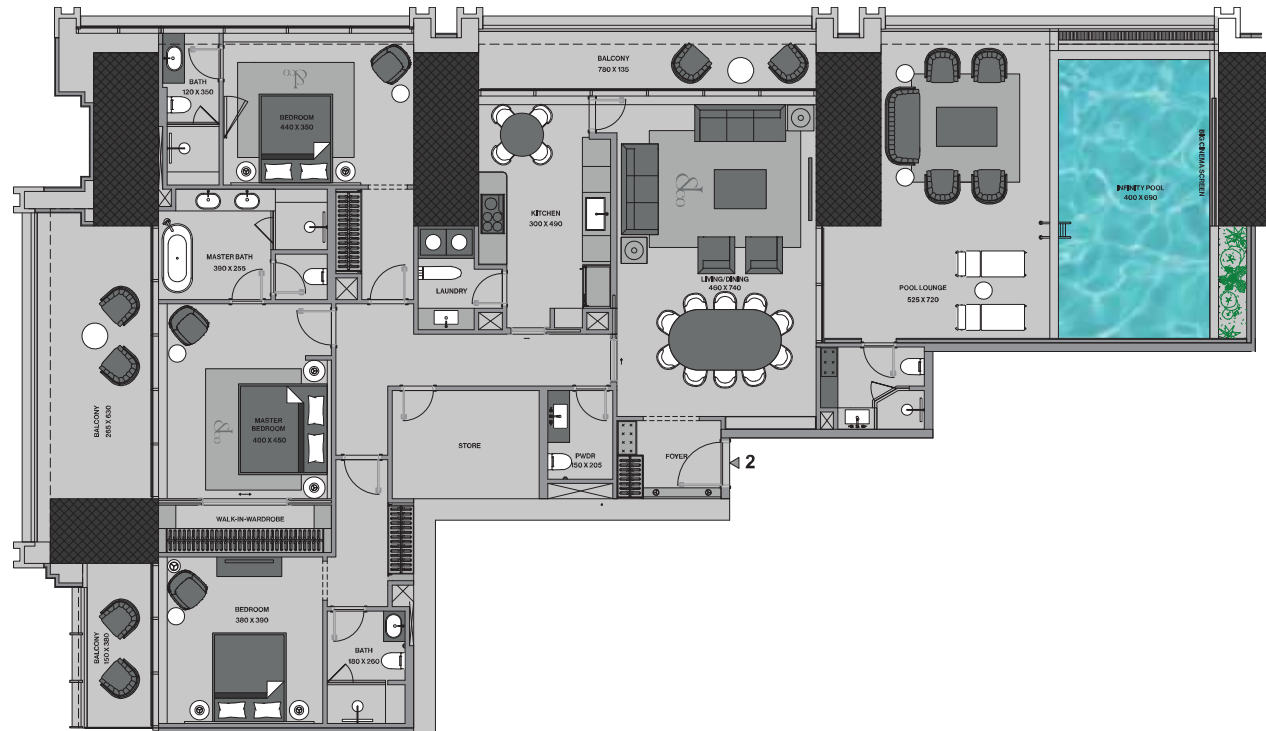
For those seeking a more varied perspective, the Ruby Villa also offers two additional unit types. The third unit type treats you to a stunning side view of downtown Dubai and the iconic Burj Khalifa, while the fourth unit type provides a perfect blend of the serene Creek Harbor and the vibrant Dubai Design District.



BURJ BINGHATTI JACOB & CO RESIDENCES

DESIGN CONCEPT

Ruby Villa



Level 49 – 82

3 Bedroom | 4 Bathroom | Infinity Pool

Suite Area: 2,090 (SQ.FT)

Terrace & Pool Area: 1,209 (SQ.FT)

Total Area: 3,299 (SQ.FT)

Parking No: 2

Disclaimer: 1. All stated dimensions and services whether in relation to the building, common areas or individual units are subject to government and local authority approvals. Final dimensions and services of the stated in your sales and purchase agreement. 2. All stated dimensions are measured to the finished elements and include all fittings and construction tolerances. 3. All dimensions have been provided by our consultant architect. 4. All provided dimensions and drawings are approximate. Dimensions is subject to change without notice. 5. Actual floor area may vary from the stated area. Drawings are not to scale. The Developer reserves the right to make any revision of drawings including for aesthetic purposes. 6. Call-lines of area are measured as the area bounded by the center line of demarcation or partition wall measuring one cent from center line, the center line of all service shafts and the center line of the service shaft including the adjoining part. 7. Call-lines of building area is measured as the area bounded by the center line of demarcation or partition wall measuring one cent from center line, the center line of the adjoining part and the center line of the adjoining building. 8. The area is measured at ground floor in the building. 9. Dimensions may vary in size depending on the floor level. 10. For each unit type, unit size and service might be different and your sales and purchase agreement will contain the actual size of each specific unit.

توضيح: 1. جميع الأبعاد والخدمات سواء في العلاقة بالمبنى، المساحات المشتركة أو الوحدات الفردية هي خاضعة للموافقات الحكومية والمحلية. الأبعاد والخدمات النهائية هي التي ستظهر في عقد البيع والشراء. 2. جميع الأبعاد والخدمات هي مقاسة إلى العناصر النهائية وتشمل التسامحات الإنشائية. 3. جميع الأبعاد والخدمات قد تم توفيرها من قبل استشارتنا المعمارية. 4. جميع الأبعاد والخدمات قد تم توفيرها من قبل استشارتنا المعمارية. 5. الأبعاد والخدمات قد تتغير دون إشعار مسبق. 6. المساحة الفعلية قد تختلف عن المساحة المعلنة. 7. الأبعاد والخدمات هي مقاسة إلى العناصر النهائية وتشمل التسامحات الإنشائية. 8. المساحة هي المقاسة على أرض الواقع في الطابق الأرضي للمبنى. 9. الأبعاد والخدمات قد تختلف باختلاف الطابق. 10. لكل نوع وحدة، المساحة والخدمات قد تختلف ويجب أن يتضمن عقد البيع والشراء الأبعاد الفعلية لكل وحدة.











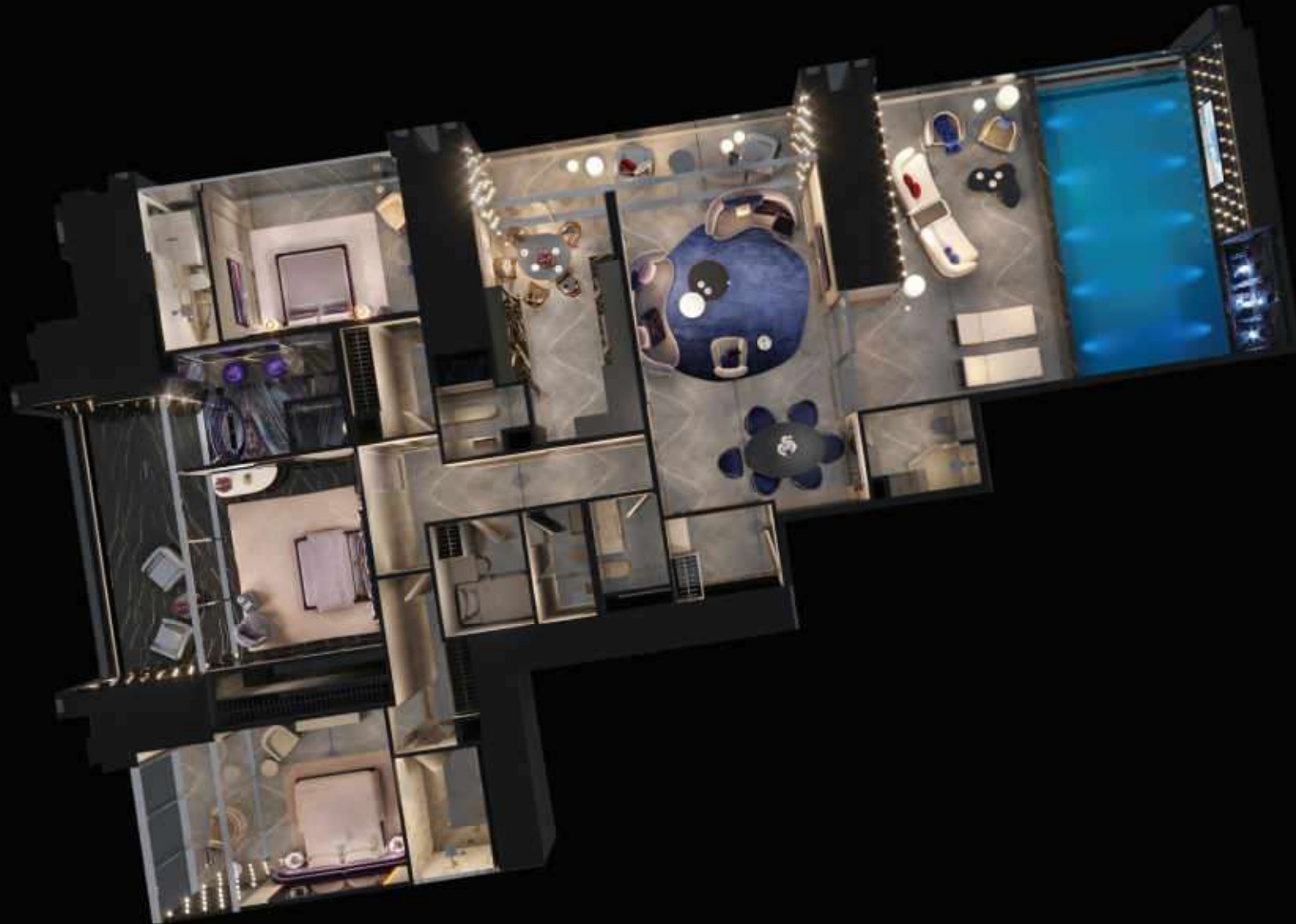












BURJ BINGHATTI
JACOB & CO
RESIDENCES

INSPIRED BY THE CRAFTSMANSHIP OF

Caviar Tourbillon Diamond

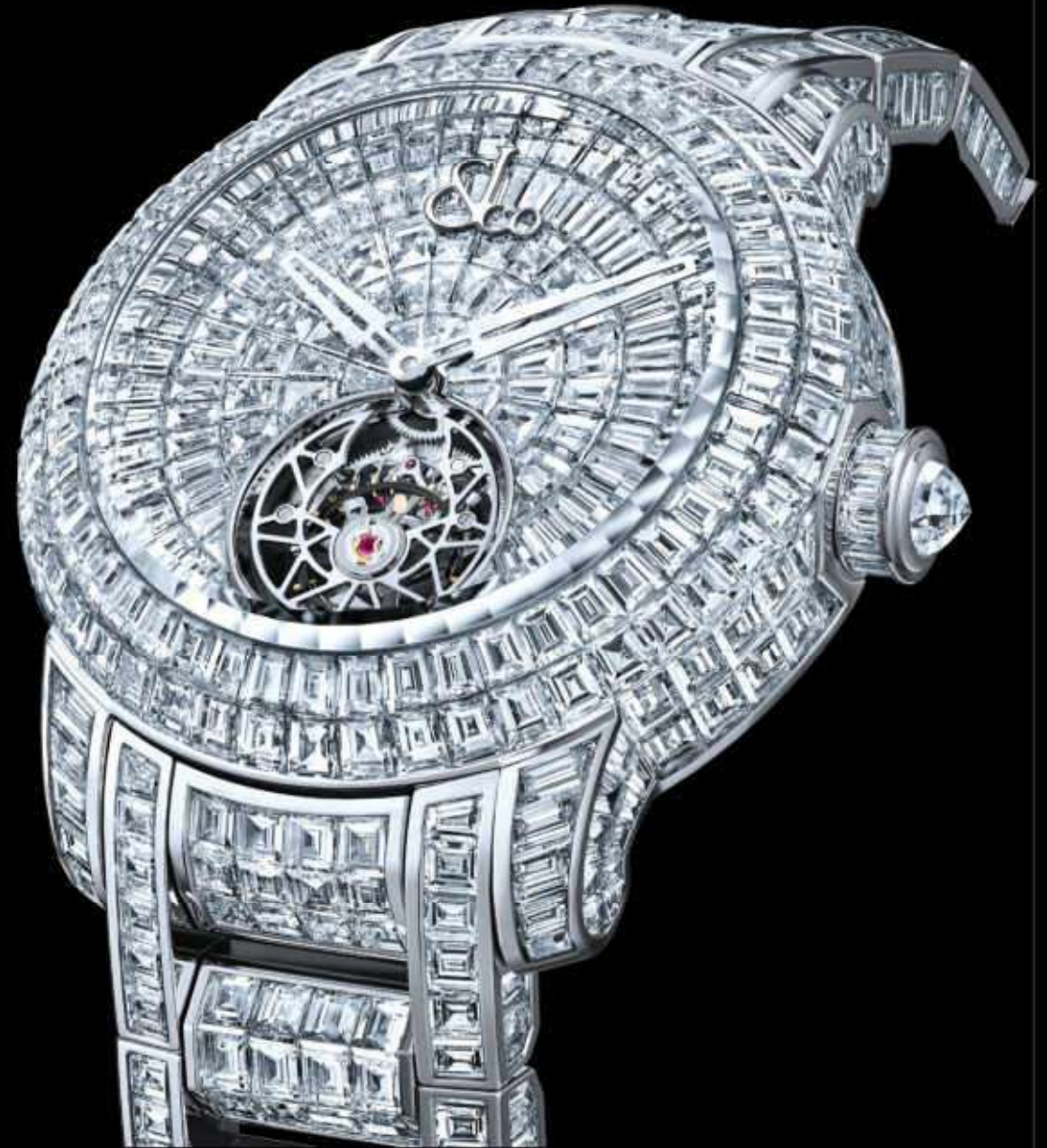
Sky Mansion on half floor with 4 luxury bedrooms.

The Diamond Sky Mansion – a high-end residence named after the illustrious Diamond Wing watch by Jacob and Co. This opulent mansion offers a truly luxurious living experience in the heart of Dubai.

Boasting four spacious and exquisite bedrooms, the Diamond Sky Mansion occupies a full half-floor space spanning from levels 83 to 96, offering breathtaking 180-degree panoramic views of the city from every angle.

There are two types of sky mansions in this collection, each designed to cater to varied preferences. The first type treats you to an awe-inspiring view of the world-famous Burj Khalifa, while the second type offers a panoramic vista of the waters of the Creek Harbor and the vibrant Dubai skyline.

Luxurious amenities and exquisite attention to detail are the hallmarks of the Diamond Sky Mansion, making it the ultimate choice for those who demand the exceptional. From the finest materials and finishes, every aspect of this fascinating residence has been meticulously crafted to exceed your expectations.



























DIAMOND SKY MANSION

BURJ BINGHATTI
JACOB & CO
RESIDENCES

DESIGN DETAILS





DIAMOND SKY MANSION

BURJ BINGHATTI
JACOB & CO
RESIDENCES

DESIGN DETAILS





DIAMOND SKY MANSION

BURJ BINGHATTI
JACOB & CO
RESIDENCES

DESIGN DETAILS



BURJ BINGHATTI
JACOB & CO
RESIDENCES

INSPIRED BY THE CRAFTSMANSHIP OF

Fleur de Jardin

Sky Mansion on half floor with 6 luxury bedrooms.

The Fleur de Jardin Sky Mansion - an exceptional residence named after the iconic Fleur de Jardin watch by Jacob and Co. This magnificent mansion offers a truly luxurious living experience in the heart of Dubai.

Boasting six spacious and opulent bedrooms, the Fleur de Jardin Sky Mansion occupies a full half-floor space spanning from levels 83-96, offering breathtaking 180-degree panoramic views of the city from every angle.

Within this premium collection, there are two types of sky mansions, each designed to cater to your unique preferences. The first type treats you to an awe-inspiring view of the world-famous Burj Khalifa, while the second type offers a panoramic vista of the waters of the Creek Harbor and the vibrant Dubai skyline.

Luxurious amenities and exquisite attention to detail are the hallmarks of the Fleur de Jardin Sky Mansion, making it the ultimate choice for those who demand the very best. From the finest materials and finishes, every aspect of this magnificent residence has been meticulously crafted to exceed your expectations.



BURJ BINGHATTI JACOB & CO RESIDENCES

DESIGN CONCEPT

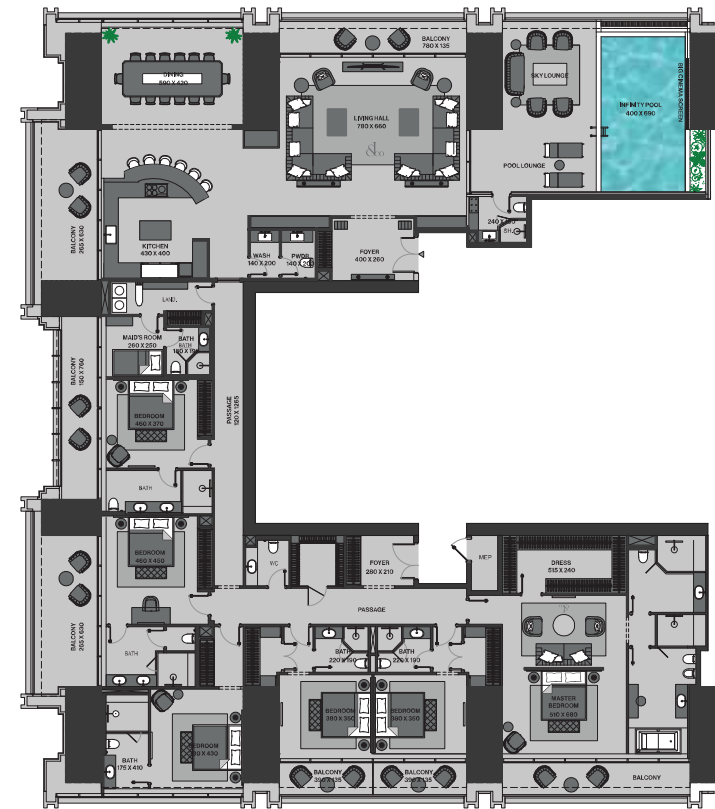
Fleur De Jardin Sky Mansion

Level 83 - 96

6 Bedroom | 9 Bathroom | Infinity Pool

Suite Area: 5,176 (SQ.FT)
Terrace & Pool Area: 1,800 (SQ.FT)

Total Area: 6,976 (SQ.FT)
Parking No: 4



توضيح: 1. جميع الأبعاد والمساحات الواردة في هذا المخطط هي تقديرات ولا يمكن استخدامها كإجراء نهائي. 2. جميع الأبعاد والمساحات الواردة في هذا المخطط هي تقديرات ولا يمكن استخدامها كإجراء نهائي. 3. جميع الأبعاد والمساحات الواردة في هذا المخطط هي تقديرات ولا يمكن استخدامها كإجراء نهائي. 4. جميع الأبعاد والمساحات الواردة في هذا المخطط هي تقديرات ولا يمكن استخدامها كإجراء نهائي. 5. جميع الأبعاد والمساحات الواردة في هذا المخطط هي تقديرات ولا يمكن استخدامها كإجراء نهائي. 6. جميع الأبعاد والمساحات الواردة في هذا المخطط هي تقديرات ولا يمكن استخدامها كإجراء نهائي. 7. جميع الأبعاد والمساحات الواردة في هذا المخطط هي تقديرات ولا يمكن استخدامها كإجراء نهائي. 8. جميع الأبعاد والمساحات الواردة في هذا المخطط هي تقديرات ولا يمكن استخدامها كإجراء نهائي. 9. جميع الأبعاد والمساحات الواردة في هذا المخطط هي تقديرات ولا يمكن استخدامها كإجراء نهائي. 10. جميع الأبعاد والمساحات الواردة في هذا المخطط هي تقديرات ولا يمكن استخدامها كإجراء نهائي.

توضيح: 1. جميع الأبعاد والمساحات الواردة في هذا المخطط هي تقديرات ولا يمكن استخدامها كإجراء نهائي. 2. جميع الأبعاد والمساحات الواردة في هذا المخطط هي تقديرات ولا يمكن استخدامها كإجراء نهائي. 3. جميع الأبعاد والمساحات الواردة في هذا المخطط هي تقديرات ولا يمكن استخدامها كإجراء نهائي. 4. جميع الأبعاد والمساحات الواردة في هذا المخطط هي تقديرات ولا يمكن استخدامها كإجراء نهائي. 5. جميع الأبعاد والمساحات الواردة في هذا المخطط هي تقديرات ولا يمكن استخدامها كإجراء نهائي. 6. جميع الأبعاد والمساحات الواردة في هذا المخطط هي تقديرات ولا يمكن استخدامها كإجراء نهائي. 7. جميع الأبعاد والمساحات الواردة في هذا المخطط هي تقديرات ولا يمكن استخدامها كإجراء نهائي. 8. جميع الأبعاد والمساحات الواردة في هذا المخطط هي تقديرات ولا يمكن استخدامها كإجراء نهائي. 9. جميع الأبعاد والمساحات الواردة في هذا المخطط هي تقديرات ولا يمكن استخدامها كإجراء نهائي. 10. جميع الأبعاد والمساحات الواردة في هذا المخطط هي تقديرات ولا يمكن استخدامها كإجراء نهائي.

FLEUR DE JARDIN
SKY MANSION

BURJ BINGHATTI
JACOB & CO
RESIDENCES

DESIGN DETAILS



FLEUR DE JARDIN
SKY MANSION

BURJ BINGHATTI
JACOB & CO
RESIDENCES

DESIGN DETAILS



FLEUR DE JARDIN
SKY MANSION

BURJ BINGHATTI
JACOB & CO
RESIDENCES

DESIGN DETAILS



FLEUR DE JARDIN
SKY MANSION

BURJ BINGHATTI
JACOB & CO
RESIDENCES

DESIGN DETAILS



FLEUR DE JARDIN
SKY MANSION

BURJ BINGHATTI
JACOB & CO
RESIDENCES

DESIGN DETAILS



FLEUR DE JARDIN
SKY MANSION

BURJ BINGHATTI
JACOB & CO
RESIDENCES

DESIGN DETAILS



FLEUR DE JARDIN
SKY MANSION

BURJ BINGHATTI
JACOB & CO
RESIDENCES

DESIGN DETAILS



FLEUR DE JARDIN
SKY MANSION

BURJ BINGHATTI
JACOB & CO
RESIDENCES

DESIGN DETAILS



FLEUR DE JARDIN
SKY MANSION

BURJ BINGHATTI
JACOB & CO
RESIDENCES

DESIGN DETAILS



FLEUR DE JARDIN
SKY MANSION

BURJ BINGHATTI
JACOB & CO
RESIDENCES

DESIGN DETAILS



FLEUR DE JARDIN
SKY MANSION

BURJ BINGHATTI
JACOB & CO
RESIDENCES

DESIGN DETAILS



FLEUR DE JARDIN
SKY MANSION

BURJ BINGHATTI
JACOB & CO
RESIDENCES

DESIGN DETAILS



BURJ BINGHATTI
JACOB & CO
RESIDENCES

INSPIRED BY THE CRAFTSMANSHIP OF

Astronomia

An elite Sky Penthouse with five bedrooms on a private floor.

The Astronomia Sky Penthouse - an exclusive set of full-floor Sky Penthouse that offer an unparalleled living experience in Dubai. Named after the iconic and prestigious Astronomia watch by Jacob and Co., this collection boasts the finest in luxury living, with spacious and opulent interiors and breathtaking 360-degree views of the city.

Each Sky Penthouse in the Astronomia Collection features five luxurious bedrooms, ample living space, and the finest finishes and amenities. But it's the view that truly sets these residences apart, with a stunning panoramic vista of the entire cityscape. From the world-famous Burj Khalifa to the bustling downtown area, the serene waters of the Creek Harbour, and the vibrant Dubai Water Canal and Dubai Design District, you'll be able to take in the entire city from the comfort of your own home.

The Astronomia Sky Penthouse is the ultimate choice for those seeking the pinnacle of luxury living in Dubai. With its unrivaled location, opulent amenities, and breathtaking views, this exclusive collection offers an unparalleled living experience that is sure to take your breath away. Come and experience the finest that life has to offer in one of the most iconic and prestigious residences in the world.





ASTRONOMIA
SKY PENTHOUSE

BURJ BINGHATTI
JACOB & CO
RESIDENCES

DESIGN DETAILS



ASTRONOMIA
SKY PENTHOUSE

BURJ BINGHATTI
JACOB & CO
RESIDENCES

DESIGN DETAILS



ASTRONOMIA
SKY PENTHOUSE

BURJ BINGHATTI
JACOB & CO
RESIDENCES

DESIGN DETAILS



ASTRONOMIA
SKY PENTHOUSE

BURJ BINGHATTI
JACOB & CO
RESIDENCES

DESIGN DETAILS



ASTRONOMIA
SKY PENTHOUSE

BURJ BINGHATTI
JACOB & CO
RESIDENCES

DESIGN DETAILS



ASTRONOMIA
SKY PENTHOUSE

BURJ BINGHATTI
JACOB & CO
RESIDENCES

DESIGN DETAILS



ASTRONOMIA
SKY PENTHOUSE

BURJ BINGHATTI
JACOB & CO
RESIDENCES

DESIGN DETAILS



ASTRONOMIA
SKY PENTHOUSE

BURJ BINGHATTI
JACOB & CO
RESIDENCES

DESIGN DETAILS



ASTRONOMIA
SKY PENTHOUSE

BURJ BINGHATTI
JACOB & CO
RESIDENCES

DESIGN DETAILS



ASTRONOMIA
SKY PENTHOUSE

BURJ BINGHATTI
JACOB & CO
RESIDENCES

DESIGN DETAILS



ASTRONOMIA
SKY PENTHOUSE

BURJ BINGHATTI
JACOB & CO
RESIDENCES

DESIGN DETAILS



ASTRONOMIA
SKY PENTHOUSE

BURJ BINGHATTI
JACOB & CO
RESIDENCES

DESIGN DETAILS



ASTRONOMIA
SKY PENTHOUSE

BURJ BINGHATTI
JACOB & CO
RESIDENCES

DESIGN DETAILS



ASTRONOMIA
SKY PENTHOUSE

BURJ BINGHATTI
JACOB & CO
RESIDENCES

DESIGN DETAILS



ASTRONOMIA
SKY PENTHOUSE

BURJ BINGHATTI
JACOB & CO
RESIDENCES

DESIGN DETAILS



BURJ BINGHATTI
JACOB & CO
RESIDENCES

INSPIRED BY THE CRAFTSMANSHIP OF

Billionaire

An elite Sky Penthouse with 7 Bedrooms on two private full floors at the top of the tallest Residential Tower in the world.

The Billionaire Sky Penthouse - a truly one-of-a-kind residence that embodies luxury and opulence at every turn. This magnificent mansion is named after the iconic Billionaire watch by Jacob and Co. and is the epitome of exclusivity and sophistication.

Located at the top two floors of The Burj Binghatti Jacob and Co. Tower, the Billionaire Sky Penthouse boasts seven spacious and luxurious bedrooms, along with ample living space that is designed to cater to your every need. From the finest materials to the most unique lifestyle and design elements, the Billionaire Sky Mansion is the ultimate expression of luxury living.

Not only does The Billionaire Sky Penthouse offer the finest amenities and luxurious living space, it also boasts an unparalleled 360-degree view of the magnificent city of Dubai. From the iconic Burj Khalifa to the bustling downtown area, the vibrant Business Bay, and the tranquil waters of the Creek Harbor, the panoramic view from the Billionaire Sky Mansion Penthouse is simply breathtaking.

In addition to these iconic landmarks, you'll also enjoy a stunning view of the serene waters of the Dubai Water Canal and the vibrant Dubai Design District, all framed by the glittering skyline of Dubai. The Billionaire Sky Penthouse offers an unparalleled living experience, where every moment is one of pure luxury and indulgence.

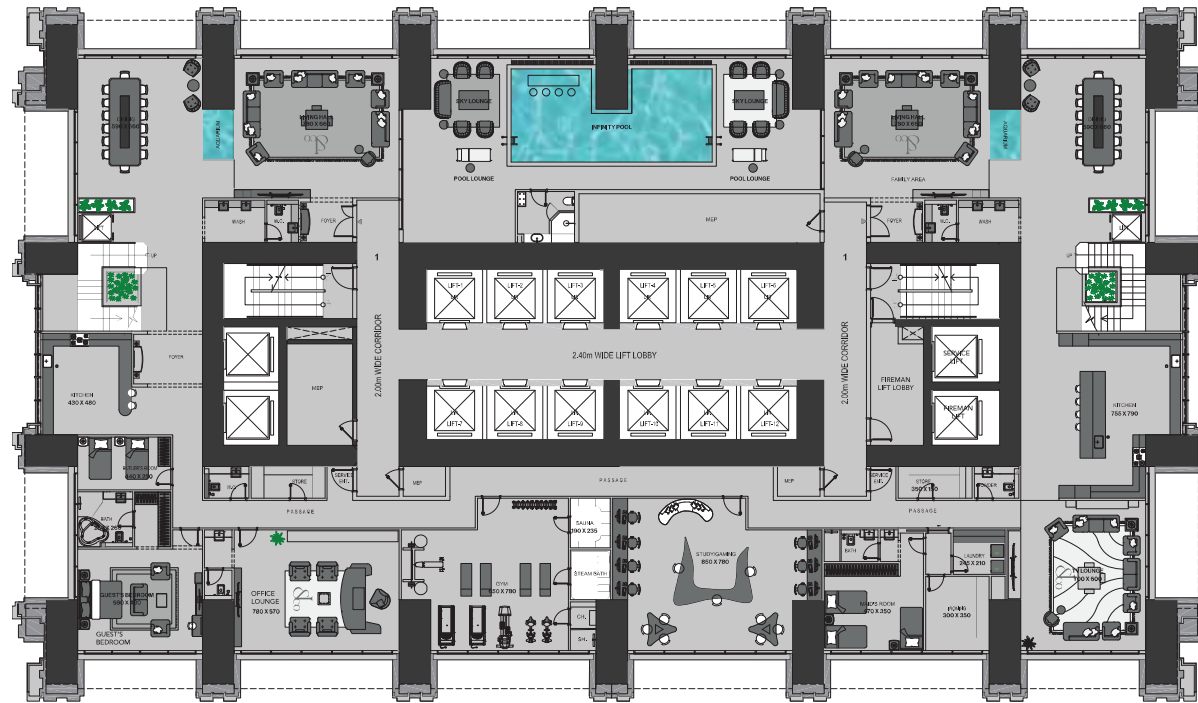


BURJ BINGHATTI JACOB & CO RESIDENCES

DESIGN CONCEPT

The Billionaire Sky Penthouse

Lower Level



Level 102 & 103 7 Bedroom | 10 Bathroom | Infinity Pool

Suite Area: 20,788 (SQ.FT)

Balcony Area: 1,681 (SQ.FT)

Total Area: 22,469 (SQ.FT)

Parking No: 12

Disclaimer: 1. All stated dimensions and location whether in relation to the building, common areas or individual units are subject to government and local authority approval. Final dimensions and services will be provided to you at the end of purchase agreement. 2. All floor dimensions are measured to structural elements and load out. 3. All dimensions have been provided on our standard grid. 4. All setbacks, dimensions and drawings are approximate. Information is not drawn through without notice. 5. Actual built area may vary from the stated area. Drawings are not to scale. The Developer reserves the right to make any necessary amendments including for services systems. 6. Call before of area area is measured as the area bounded by the center line of demarcation or partition wall. 7. The area of any unit from another unit, the exterior face of all exterior walls, and the exterior face of the corridor wall and along the adjoining unit. 8. Call before of building area is measured as the area bounded by the center line of demarcation or partition wall. 9. Separating area are from another unit, the exterior face of all exterior walls and the exterior face of the corridor wall and along the adjoining building. The area is measured as per floor in the building. 10. Balcony area may vary in size depending on the floor level. 11. For each unit type, unit size and design might be different and your type and purchase agreement will contain the actual size of each specific unit.

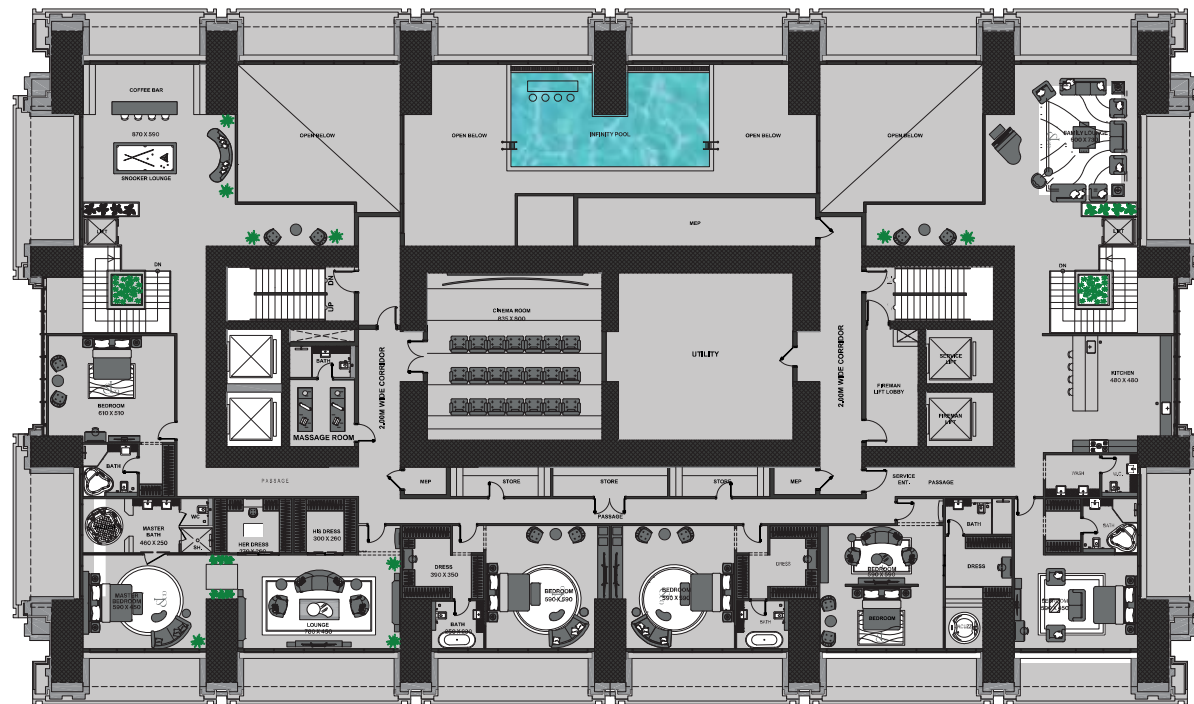
التوضيح: 1. جميع الأبعاد والمواقع سواء في العلاقة مع المبنى، المساحات المشتركة أو الوحدات الفردية هي تخمينية وتحتفظ الشركة بحقوقها من قبل الجهات المختصة بالموافقة على الأبعاد والخدمات. الأبعاد النهائية والخدمة المقدمة لك ستكون متاحة في نهاية العقد. 2. جميع الأبعاد المقاسة هي للأبعاد الهيكلية والخطوات. 3. جميع الأبعاد المقاسة هي للأبعاد الهيكلية والخطوات. 4. جميع الأبعاد المقاسة هي للأبعاد الهيكلية والخطوات. 5. الأبعاد الحقيقية قد تختلف عن الأبعاد المرسومة. 6. الأبعاد الحقيقية قد تختلف عن الأبعاد المرسومة. 7. الأبعاد الحقيقية قد تختلف عن الأبعاد المرسومة. 8. الأبعاد الحقيقية قد تختلف عن الأبعاد المرسومة. 9. الأبعاد الحقيقية قد تختلف عن الأبعاد المرسومة. 10. الأبعاد الحقيقية قد تختلف عن الأبعاد المرسومة. 11. الأبعاد الحقيقية قد تختلف عن الأبعاد المرسومة. 12. الأبعاد الحقيقية قد تختلف عن الأبعاد المرسومة.

BURJ BINGHATTI JACOB & CO RESIDENCES

DESIGN CONCEPT

The Billionaire Sky Penthouse

Upper Level



Level 102 & 103

7 Bedroom | 10 Bathroom | Infinity Pool

Suite Area: 20,788 (SQ.FT)

Balcony Area: 1,681 (SQ.FT)

Total Area: 22,469 (SQ.FT)

Parking No: 12

Disclaimer: All stated dimensions and section whether in relation to the building, common areas or individual units are subject to government and local authority approval. Final dimensions and section will be based on final approved and purchase agreement. 1. All room dimensions are measured to structural elements and each unit will follow local construction regulations. 2. All dimensions have been provided on our standard footprint. 3. All room, dimensions and drawings are approximate. Information is not subject to change without notice. 4. Actual floor area may vary from the stated area. Drawings are not to scale. The floor plan reserves the right to make any reasonable amendments including for services systems. 5. Call before of area are measured as the area bounded by the center line of demarcation or partition wall. 6. The area from another unit, the exterior face of all exterior walls, and the exterior face of the exterior wall including the adjoining unit. 7. Call before of balcony area is measured as the area bounded by the center line of demarcation or partition wall. 8. The area from another unit, the exterior face of all exterior walls, and the exterior face of the exterior wall including the adjoining unit. 9. The area is measured as per floor to the floor 10. Balcony area may vary in size depending on the floor level. 11. For each unit type, unit sizes and details might be different and your sales and purchase agreement will contain the actual size of each specific unit.

التوضيح: إن الأبعاد المرفقة هنا هي تقديرات استناداً إلى المخططات المعمارية التي تم إعدادها من قبل المصمم. جميع الأبعاد تقريباً هي تقديرات. الأبعاد النهائية ستعتمد على الموافقات الحكومية والأدلة المعمارية النهائية. 1. جميع الأبعاد تقريباً هي تقديرات استناداً إلى المخططات المعمارية التي تم إعدادها من قبل المصمم. جميع الأبعاد تقريباً هي تقديرات. الأبعاد النهائية ستعتمد على الموافقات الحكومية والأدلة المعمارية النهائية. 2. جميع الأبعاد تقريباً هي تقديرات استناداً إلى المخططات المعمارية التي تم إعدادها من قبل المصمم. جميع الأبعاد تقريباً هي تقديرات. الأبعاد النهائية ستعتمد على الموافقات الحكومية والأدلة المعمارية النهائية. 3. جميع الأبعاد تقريباً هي تقديرات استناداً إلى المخططات المعمارية التي تم إعدادها من قبل المصمم. جميع الأبعاد تقريباً هي تقديرات. الأبعاد النهائية ستعتمد على الموافقات الحكومية والأدلة المعمارية النهائية. 4. جميع الأبعاد تقريباً هي تقديرات استناداً إلى المخططات المعمارية التي تم إعدادها من قبل المصمم. جميع الأبعاد تقريباً هي تقديرات. الأبعاد النهائية ستعتمد على الموافقات الحكومية والأدلة المعمارية النهائية. 5. جميع الأبعاد تقريباً هي تقديرات استناداً إلى المخططات المعمارية التي تم إعدادها من قبل المصمم. جميع الأبعاد تقريباً هي تقديرات. الأبعاد النهائية ستعتمد على الموافقات الحكومية والأدلة المعمارية النهائية. 6. جميع الأبعاد تقريباً هي تقديرات استناداً إلى المخططات المعمارية التي تم إعدادها من قبل المصمم. جميع الأبعاد تقريباً هي تقديرات. الأبعاد النهائية ستعتمد على الموافقات الحكومية والأدلة المعمارية النهائية. 7. جميع الأبعاد تقريباً هي تقديرات استناداً إلى المخططات المعمارية التي تم إعدادها من قبل المصمم. جميع الأبعاد تقريباً هي تقديرات. الأبعاد النهائية ستعتمد على الموافقات الحكومية والأدلة المعمارية النهائية. 8. جميع الأبعاد تقريباً هي تقديرات استناداً إلى المخططات المعمارية التي تم إعدادها من قبل المصمم. جميع الأبعاد تقريباً هي تقديرات. الأبعاد النهائية ستعتمد على الموافقات الحكومية والأدلة المعمارية النهائية. 9. جميع الأبعاد تقريباً هي تقديرات استناداً إلى المخططات المعمارية التي تم إعدادها من قبل المصمم. جميع الأبعاد تقريباً هي تقديرات. الأبعاد النهائية ستعتمد على الموافقات الحكومية والأدلة المعمارية النهائية. 10. جميع الأبعاد تقريباً هي تقديرات استناداً إلى المخططات المعمارية التي تم إعدادها من قبل المصمم. جميع الأبعاد تقريباً هي تقديرات. الأبعاد النهائية ستعتمد على الموافقات الحكومية والأدلة المعمارية النهائية. 11. جميع الأبعاد تقريباً هي تقديرات استناداً إلى المخططات المعمارية التي تم إعدادها من قبل المصمم. جميع الأبعاد تقريباً هي تقديرات. الأبعاد النهائية ستعتمد على الموافقات الحكومية والأدلة المعمارية النهائية.

BURJ BINGHATTI
JACOB & CO
RESIDENCES

DESIGN DETAILS

Illuminating
Unrivalled Affluence



Conclusive Dexterity



Velvet Fabric
Dusky Blue



Velvet Fabric
Royal Blue



Velvet Fabric
Sapphire Blue



White Fluted
Wood Panel



White Scalloped
Flute Wood Panel



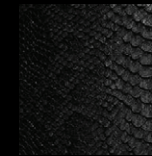
Tinted Brown
Glass



Mirror
Glass



Tinted Violet
Glass



Leather Black
Snakeskin Texture

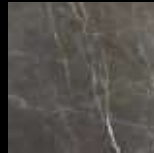
Conclusive Dexterity



Nero Marquina
Black Marble



Black River
Marble



Asian St. Laurent
Marble



Brass Metal
Glossy



Glossy Black
Panel



Calacatta Borghini
Porcelain Slab-Polished



Stainless Matte
Black Panel



Calacatta Borghini
Marble



Brushed Stainless
Steel Ripple Finish

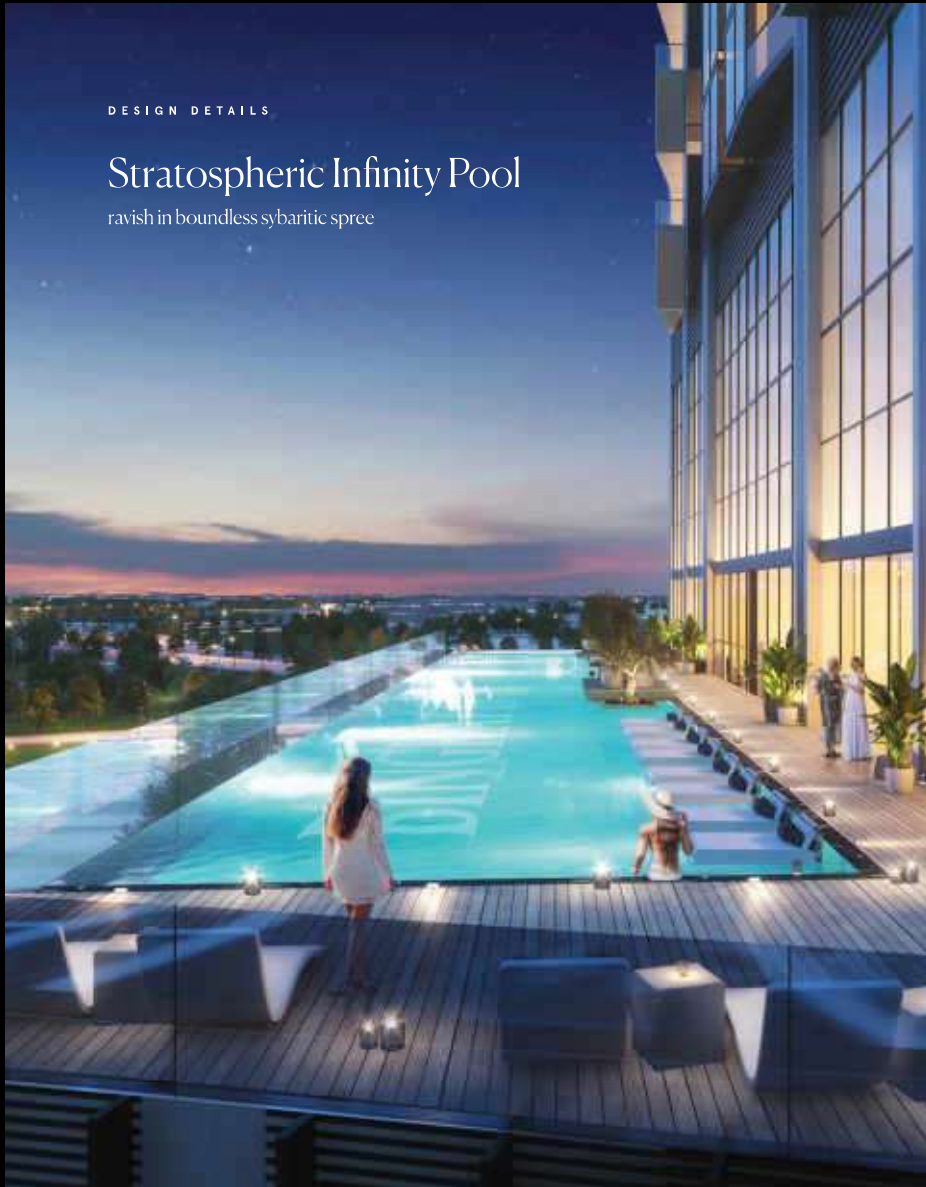


BURJ BINGHATTI
JACOB & CO
RESIDENCES

DESIGN DETAILS

Stratospheric Infinity Pool

ravish in boundless sybaritic spree



BURJ BINGHATTI
JACOB & CO
RESIDENCES

DESIGN DETAILS

Bask in
Uttermost
Grandeur



The Zenith of
Artistry and Opulence

BURJ BINGHATTI
JACOB & CO
RESIDENCES



Inspired by
the Impossible

BURJ BINGHATTI
JACOB & CO
RESIDENCES





BINGHATTI | JACOB&CO

Mobile No: +97150 373 1898, e-mail: info@tsr-realestate.com
www.tsr-realestate.com