

P A L M  
V I E W



TSR

— REAL ESTATE —

F L O O R P L A N S

# P A L M V I E W

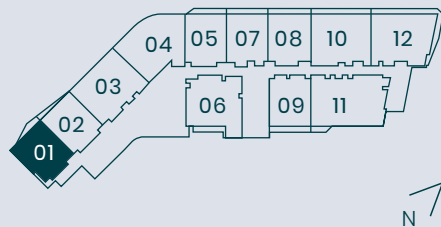


## 1 B E D R O O M

Type 1A Unit 01 Levels 17-40

	Sq.M	Sq.Ft
Suite area	94.01	1,011.92
Balcony area	6.63	71.36
Total area	100.64	1,083.28

\*Refer to sales schedule for individual specific unit areas



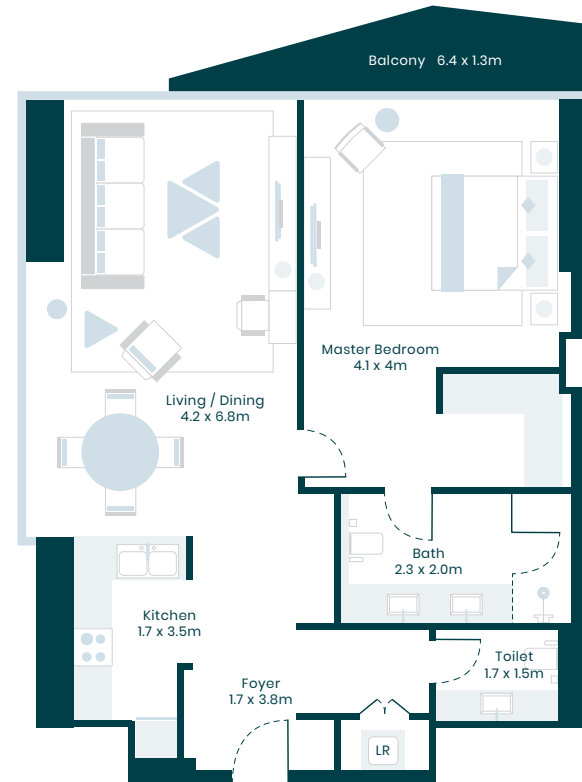
B L U E W A T E R S  
I S L A N D



P A L M  
J U M E I R A H



B U R J  
A L A R A B



E M I R A T E S  
G O L F C O U R S E

\*Disclaimer: (1.) All room dimensions are measured to structural elements and exclude wall finishes and construction tolerance. (2.) All dimensions have been provided by our consultant architects. (3.) All materials, dimensions & drawings are approximate. Information is subject to change without notice. (4.) Actual suite area may vary from the stated area. Drawings are not to scale. The developer reserves the right to make revisions. (5.) Calculation of suite area is measured as the area bounded by the centre line of demising wall or partition walls separating one units from another unit, the exterior face of all walls, and the exterior face of the corridor wall enclosing the adjoining unit. Calculation of balcony area is measured as the area bounded by the centre line of demising wall or partition walls separating one units from another unit, the utmost face of the enclosing guard and the external face of the unit.

# PALM VIEW



**TSR**  
—REAL ESTATE—

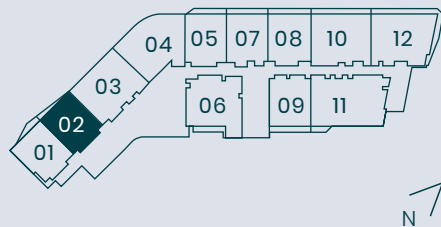


## 1 BEDROOM

Type 1B Unit 02 Levels 17-40

	Sq.M	Sq.Ft
Suite area	95.71	1,030.21
Balcony area	5.99	64.48
Total area	101.70	1,094.69

\*Refer to sales schedule for individual specific unit areas



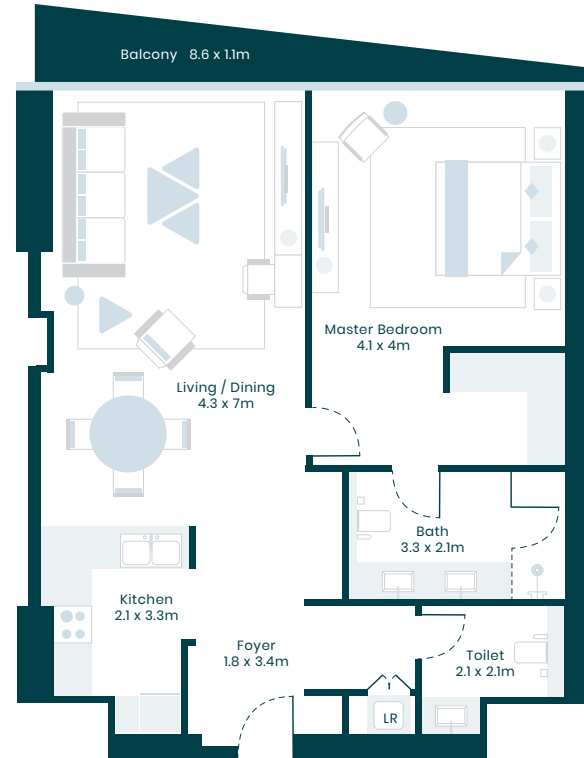
BLUEWATERS  
ISLAND



PALM  
JUMEIRAH



BURJ  
AL ARAB



EMIRATES  
GOLF COURSE

\*Disclaimer: (1.) All room dimensions are measured to structural elements and exclude wall finishes and construction tolerance. (2.) All dimensions have been provided by our consultant architects. (3.) All materials, dimensions & drawings are approximate. Information is subject to change without notice. (4.) Actual suite area may vary from the stated area. Drawings are not to scale. The developer reserves the right to make revisions. (5.) Calculation of suite area is measured as the area bounded by the centre line of demising wall or partition walls separating one units from another unit, the exterior face of all walls, and the exterior face of the corridor wall enclosing the adjoining unit. Calculation of balcony area is measured as the area bounded by the centre line of demising wall or partition walls separating one units from another unit, the utmost face of the enclosing guard and the external face of the unit.

# P A L M V I E W



**TSR**  
— REAL ESTATE —

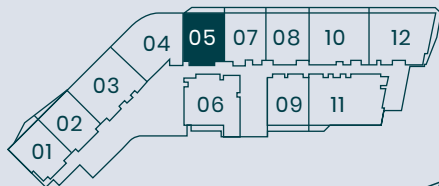


## 1 B E D R O O M

Type 1C Unit 05 Levels 17-21

	Sq.M	Sq.Ft
Suite area	95.56	1,028.60
Balcony area	9.32	100.32
Total area	104.88	1,128.92

\*Refer to sales schedule for individual specific unit areas



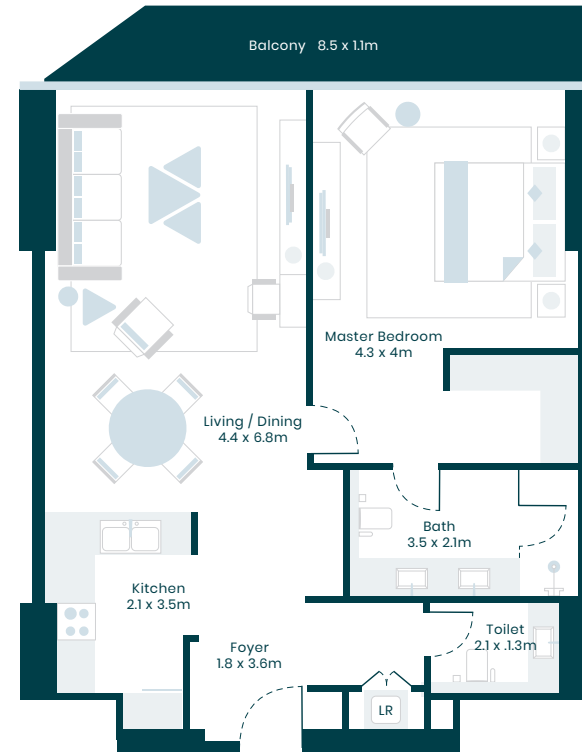
BLUEWATERS  
ISLAND



PALM  
JUMEIRAH



BURJ  
AL ARAB



EMIRATES  
GOLF COURSE

\*Disclaimer: (1.) All room dimensions are measured to structural elements and exclude wall finishes and construction tolerance. (2.) All dimensions have been provided by our consultant architects. (3.) All materials, dimensions & drawings are approximate. Information is subject to change without notice. (4.) Actual suite area may vary from the stated area. Drawings are not to scale. The developer reserves the right to make revisions. (5.) Calculation of suite area is measured as the area bounded by the centre line of demising wall or partition walls separating one units from another unit, the exterior face of all walls, and the exterior face of the corridor wall enclosing the adjoining unit. Calculation of balcony area is measured as the area bounded by the centre line of demising wall or partition walls separating one units from another unit, the utmost face of the enclosing guard and the external face of the unit.



# P A L M V I E W



**TSR**

— REAL ESTATE —



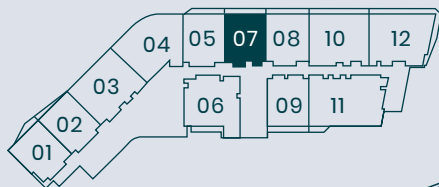
## 1 B E D R O O M

Type 1D Unit 07-06\* Levels 17-21

	Sq.M	Sq.Ft
Suite area	94.29	1,014.93
Balcony area	10.45	112.48
Total area	104.74	1,127.41

\*Refer to sales schedule for individual specific unit areas

\*From level 17 to 19 unit number is 07 & for level 20 & 21 unit number is 06



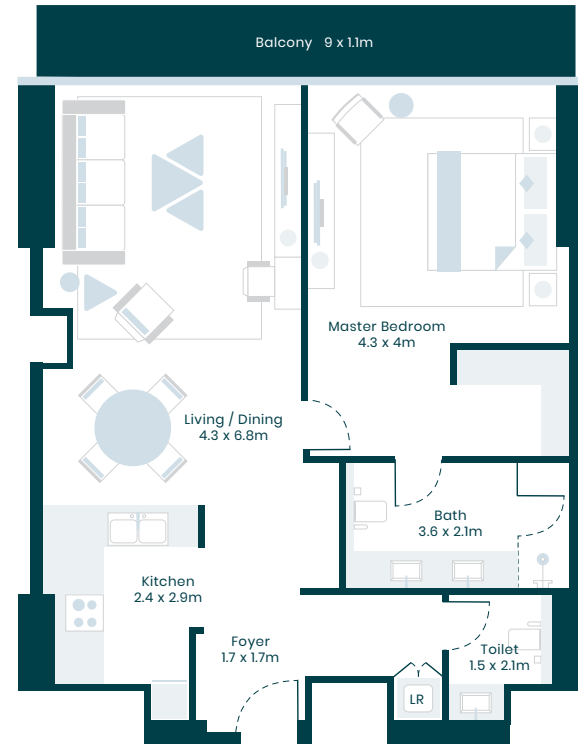
B L U E W A T E R S  
I S L A N D



P A L M  
J U M E I R A H



B U R J  
A L A R A B



E M I R A T E S  
G O L F C O U R S E

**\*Disclaimer:** (1.) All room dimensions are measured to structural elements and exclude wall finishes and construction tolerance. (2.) All dimensions have been provided by our consultant architects. (3.) All materials, dimensions & drawings are approximate. Information is subject to change without notice. (4.) Actual suite area may vary from the stated area. Drawings are not to scale. The developer reserves the right to make revisions. (5.) Calculation of suite area is measured as the area bounded by the centre line of demising wall or partition walls separating one units from another unit, the exterior face of all walls, and the exterior face of the corridor wall enclosing the adjoining unit. Calculation of balcony area is measured as the area bounded by the centre line of demising wall or partition walls separating one units from another unit, the utmost face of the enclosing guard and the external face of the unit.

# P A L M V I E W



**TSR**  
—REAL ESTATE—



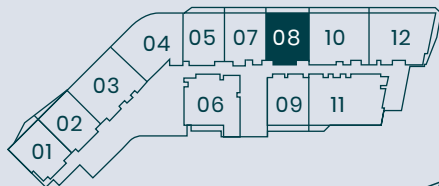
## 1 B E D R O O M

Type 1E Unit 08-07\* Levels 17-21

	Sq.M	Sq.Ft
Suite area	95.05	1,023.11
Balcony area	10.45	112.48
Total area	105.50	1,135.59

\*Refer to sales schedule for individual specific unit areas

\*From level 17 to 19 unit number is 08 & for level 20 & 21 unit number is 07



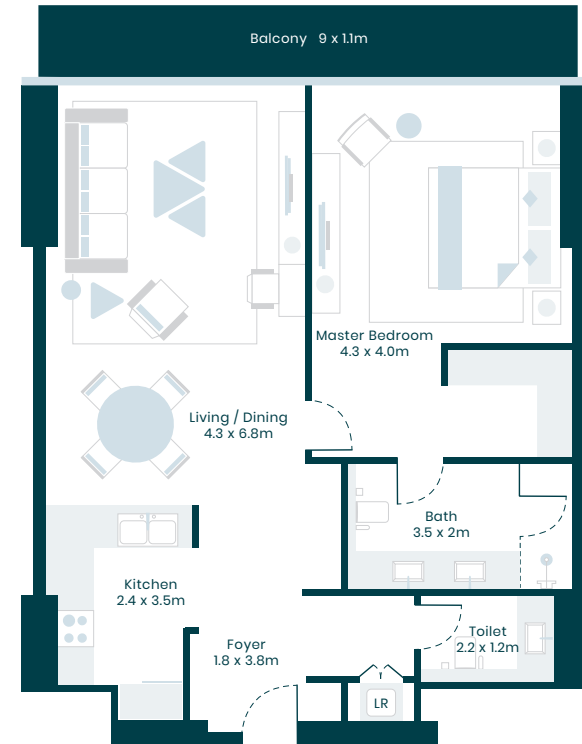
BLUEWATERS  
ISLAND



PALM  
JUMEIRAH



BURJ  
AL ARAB



EMIRATES  
GOLF COURSE

\*Disclaimer: (1.) All room dimensions are measured to structural elements and exclude wall finishes and construction tolerance. (2.) All dimensions have been provided by our consultant architects. (3.) All materials, dimensions & drawings are approximate. Information is subject to change without notice. (4.) Actual suite area may vary from the stated area. Drawings are not to scale. The developer reserves the right to make revisions. (5.) Calculation of suite area is measured as the area bounded by the centre line of demising wall or partition walls separating one units from another unit, the exterior face of all walls, and the exterior face of the corridor wall enclosing the adjoining unit. Calculation of balcony area is measured as the area bounded by the centre line of demising wall or partition walls separating one units from another unit, the utmost face of the enclosing guard and the external face of the unit.

# P A L M V I E W



**TSR**

—REAL ESTATE—



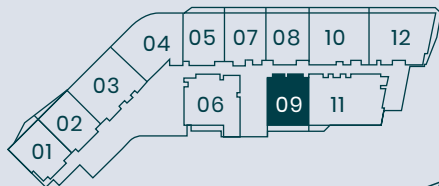
## 1 B E D R O O M

Type 1F Unit 09-08\* Levels 17-40

	Sq.M	Sq.Ft
Suite area	96.04	1,033.77
Balcony area	10.71	115.28
Total area	106.75	1,149.05

\*Refer to sales schedule for individual specific unit areas

\*From level 17 to 19 unit number is 09 & for level 20-40 unit number is 08



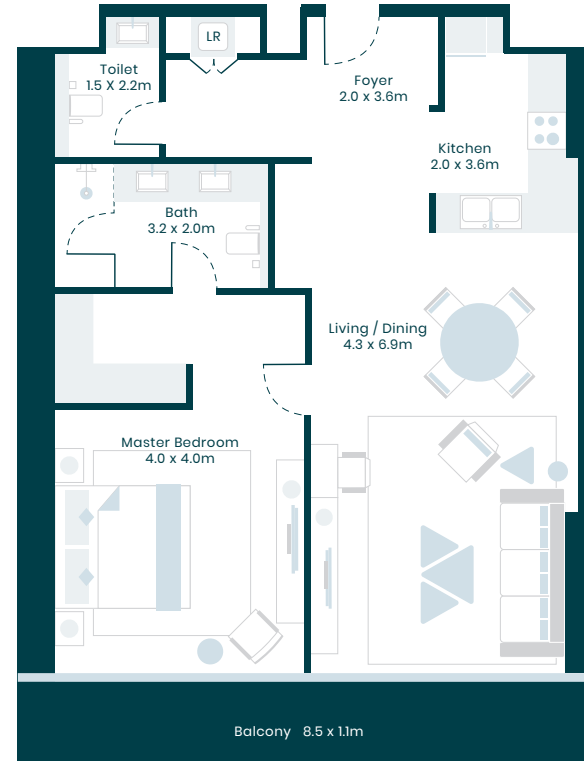
B L U E W A T E R S  
I S L A N D



P A L M  
J U M E I R A H



B U R J  
A L A R A B



E M I R A T E S  
G O L F C O U R S E

**\*Disclaimer:** (1.) All room dimensions are measured to structural elements and exclude wall finishes and construction tolerance. (2.) All dimensions have been provided by our consultant architects. (3.) All materials, dimensions & drawings are approximate. Information is subject to change without notice. (4.) Actual suite area may vary from the stated area. Drawings are not to scale. The developer reserves the right to make revisions. (5.) Calculation of suite area is measured as the area bounded by the centre line of demising wall or partition walls separating one units from another unit, the exterior face of all walls, and the exterior face of the corridor wall enclosing the adjoining unit. Calculation of balcony area is measured as the area bounded by the centre line of demising wall or partition walls separating one units from another unit, the utmost face of the enclosing guard and the external face of the unit.

# P A L M V I E W



**TSR**  
—REAL ESTATE—

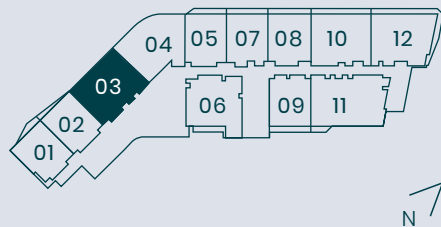


## 2 B E D R O O M S

Type 2A Unit 03 Levels 17-40

	Sq.M	Sq.Ft
Suite area	142.70	1,536.01
Balcony area	0.00	0.00
Total area	142.70	1,536.01

\*Refer to sales schedule for individual specific unit areas



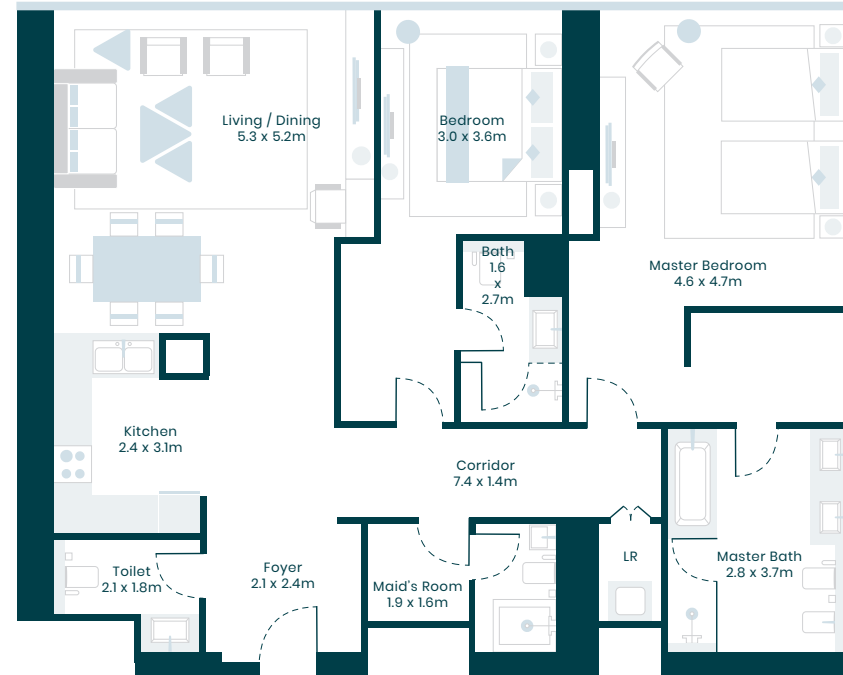
B L U E W A T E R S  
I S L A N D



P A L M  
J U M E I R A H



B U R J  
A L A R A B



E M I R A T E S  
G O L F C O U R S E

**\*Disclaimer:** (1.) All room dimensions are measured to structural elements and exclude wall finishes and construction tolerance. (2.) All dimensions have been provided by our consultant architects. (3.) All materials, dimensions & drawings are approximate. Information is subject to change without notice. (4.) Actual suite area may vary from the stated area. Drawings are not to scale. The developer reserves the right to make revisions. (5.) Calculation of suite area is measured as the area bounded by the centre line of demising wall or partition walls separating one units from another unit, the exterior face of all walls, and the exterior face of the corridor wall enclosing the adjoining unit. Calculation of balcony area is measured as the area bounded by the centre line of demising wall or partition walls separating one units from another unit, the utmost face of the enclosing guard and the external face of the unit.



# P A L M V I E W



**TSR**  
— REAL ESTATE —

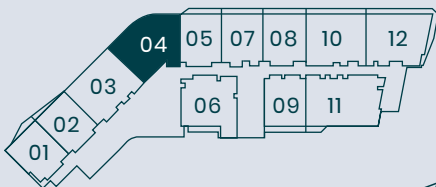


## 2 B E D R O O M S

Type 2B Unit 04 Levels 17-40

	Sq.M	Sq.Ft
Suite area	146.77	1,579.82
Balcony area	0.00	0.00
Total area	146.77	1,579.82

\*Refer to sales schedule for individual specific unit areas



B L U E W A T E R S  
I S L A N D



P A L M  
J U M E I R A H



B U R J  
A L A R A B



E M I R A T E S  
G O L F C O U R S E

**\*Disclaimer:** (1.) All room dimensions are measured to structural elements and exclude wall finishes and construction tolerance. (2.) All dimensions have been provided by our consultant architects. (3.) All materials, dimensions & drawings are approximate. Information is subject to change without notice. (4.) Actual suite area may vary from the stated area. Drawings are not to scale. The developer reserves the right to make revisions. (5.) Calculation of suite area is measured as the area bounded by the centre line of demising wall or partition walls separating one units from another unit, the exterior face of all walls, and the exterior face of the corridor wall enclosing the adjoining unit. Calculation of balcony area is measured as the area bounded by the centre line of demising wall or partition walls separating one units from another unit, the utmost face of the enclosing guard and the external face of the unit.

# P A L M V I E W



**TSR**  
— REAL ESTATE —



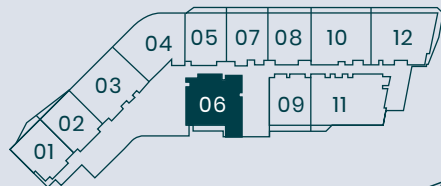
## 2 B E D R O O M S

Type 2C Unit 06-03\* Levels 17-40

	Sq.M	Sq.Ft
Suite area	134.09	1,443.33
Balcony area	8.34	89.77
Total area	142.43	1,533.10

\*Refer to sales schedule for individual specific unit areas

\*From level 17 to 40 unit number is 06 & for level 41 to 43 unit number is 03



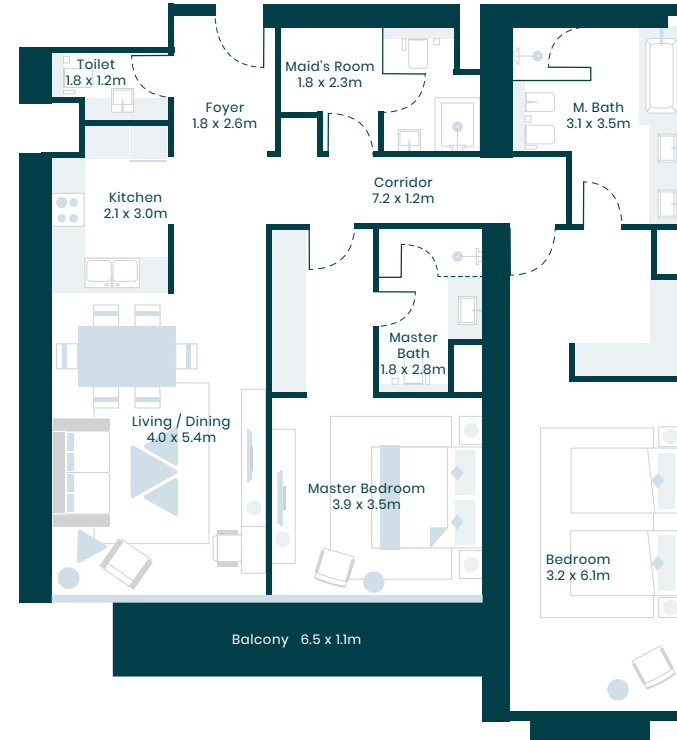
B L U E W A T E R S  
I S L A N D



P A L M  
J U M E I R A H



B U R J  
A L A R A B



E M I R A T E S  
G O L F C O U R S E

**\*Disclaimer:** (1.) All room dimensions are measured to structural elements and exclude wall finishes and construction tolerance. (2.) All dimensions have been provided by our consultant architects. (3.) All materials, dimensions & drawings are approximate. Information is subject to change without notice. (4.) Actual suite area may vary from the stated area. Drawings are not to scale. The developer reserves the right to make revisions. (5.) Calculation of suite area is measured as the area bounded by the centre line of demising wall or partition walls separating one units from another unit, the exterior face of all walls, and the exterior face of the corridor wall enclosing the adjoining unit. Calculation of balcony area is measured as the area bounded by the centre line of demising wall or partition walls separating one units from another unit, the utmost face of the enclosing guard and the external face of the unit.

# PALM VIEW



**TSR**  
— REAL ESTATE —



## 2 BEDROOMS

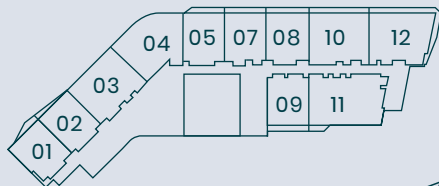
Type 2C Unit 06-03\* Levels 17-40

	Sq.M	Sq.Ft
Suite area	134.09	1,443.33
Balcony area	8.34	89.77
Total area	142.43	1,533.10

\*Refer to sales schedule for individual specific unit areas

\*From level 17 to 40 unit number is 06 & for level 41 to 43 unit number is 03

\*MEP Level 20-21



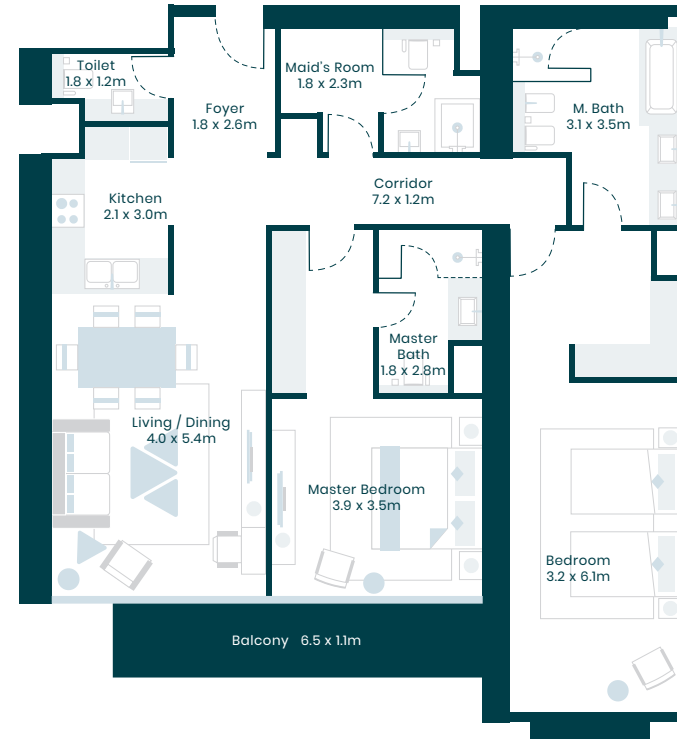
BLUEWATERS  
ISLAND



PALM  
JUMEIRAH



BURJ  
AL ARAB



EMIRATES  
GOLF COURSE

**\*Disclaimer:** (1.) All room dimensions are measured to structural elements and exclude wall finishes and construction tolerance. (2.) All dimensions have been provided by our consultant architects. (3.) All materials, dimensions & drawings are approximate. Information is subject to change without notice. (4.) Actual suite area may vary from the stated area. Drawings are not to scale. The developer reserves the right to make revisions. (5.) Calculation of suite area is measured as the area bounded by the centre line of demising wall or partition walls separating one units from another unit, the exterior face of all walls, and the exterior face of the corridor wall enclosing the adjoining unit. Calculation of balcony area is measured as the area bounded by the centre line of demising wall or partition walls separating one units from another unit, the utmost face of the enclosing guard and the external face of the unit.

# P A L M V I E W



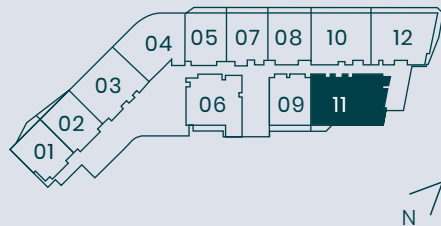
## 2 B E D R O O M S

Type 2D Unit 11-10\* Levels 17-40

	Sq.M	Sq.Ft
Suite area	172.62	1,858.07
Balcony area*	4.40	47.36
Total area	177.02	1,905.43

\*Balcony area varies by floor, refer to sales schedule for individual specific unit areas

\*From level 17 to 19 unit number is 11 & from level 20 to 40 unit number is 10



B L U E W A T E R S  
I S L A N D



P A L M  
J U M E I R A H



B U R J  
A L A R A B



\*Disclaimer: (1.) All room dimensions are measured to structural elements and exclude wall finishes and construction tolerance. (2.) All dimensions have been provided by our consultant architects. (3.) All materials, dimensions & drawings are approximate. Information is subject to change without notice. (4.) Actual suite area may vary from the stated area. Drawings are not to scale. The developer reserves the right to make revisions. (5.) Calculation of suite area is measured as the area bounded by the centre line of demising wall or partition walls separating one units from another unit, the exterior face of all walls, and the exterior face of the corridor wall enclosing the adjoining unit. Calculation of balcony area is measured as the area bounded by the centre line of demising wall or partition walls separating one units from another unit, the utmost face of the enclosing guard and the external face of the unit.

# PALM VIEW



**TSR**

— REAL ESTATE —



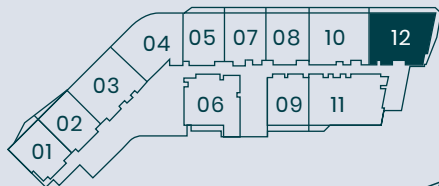
## 2 BEDROOMS

Type 2E Unit 12-11\* Levels 17-21

	Sq.M	Sq.Ft
Suite area	133.70	1,439.13
Balcony area*	11.51	123.89
Total area	145.21	1,563.03

\*Balcony area varies by floor, refer to sales schedule for individual specific unit areas

\*From level 17 to 19 unit number is 12 & for level 20 & 21 unit number is 11



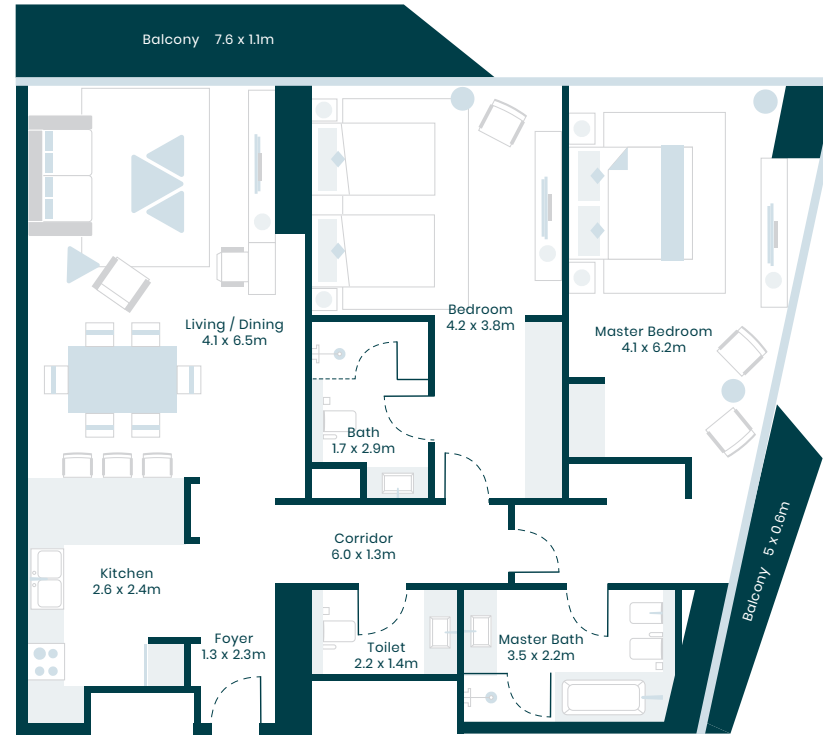
BLUEWATERS  
ISLAND



PALM  
JUMEIRAH



BURJ  
AL ARAB



EMIRATES  
GOLF COURSE

**\*Disclaimer:** (1.) All room dimensions are measured to structural elements and exclude wall finishes and construction tolerance. (2.) All dimensions have been provided by our consultant architects. (3.) All materials, dimensions & drawings are approximate. Information is subject to change without notice. (4.) Actual suite area may vary from the stated area. Drawings are not to scale. The developer reserves the right to make revisions. (5.) Calculation of suite area is measured as the area bounded by the centre line of demising wall or partition walls separating one units from another unit, the exterior face of all walls, and the exterior face of the corridor wall enclosing the adjoining unit. Calculation of balcony area is measured as the area bounded by the centre line of demising wall or partition walls separating one units from another unit, the utmost face of the enclosing guard and the external face of the unit.

# PALM VIEW



**TSR**

—REAL ESTATE—

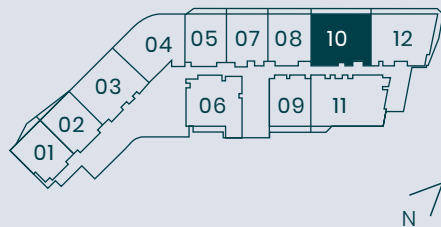


## 2 BEDROOMS

Type 2F    Unit 10    Levels 17-21

	Sq.M	Sq.Ft
Suite area	143.73	1,547.10
Balcony area	15.63	168.24
Total area	159.36	1,715.34

\*Refer to sales schedule for individual specific unit areas



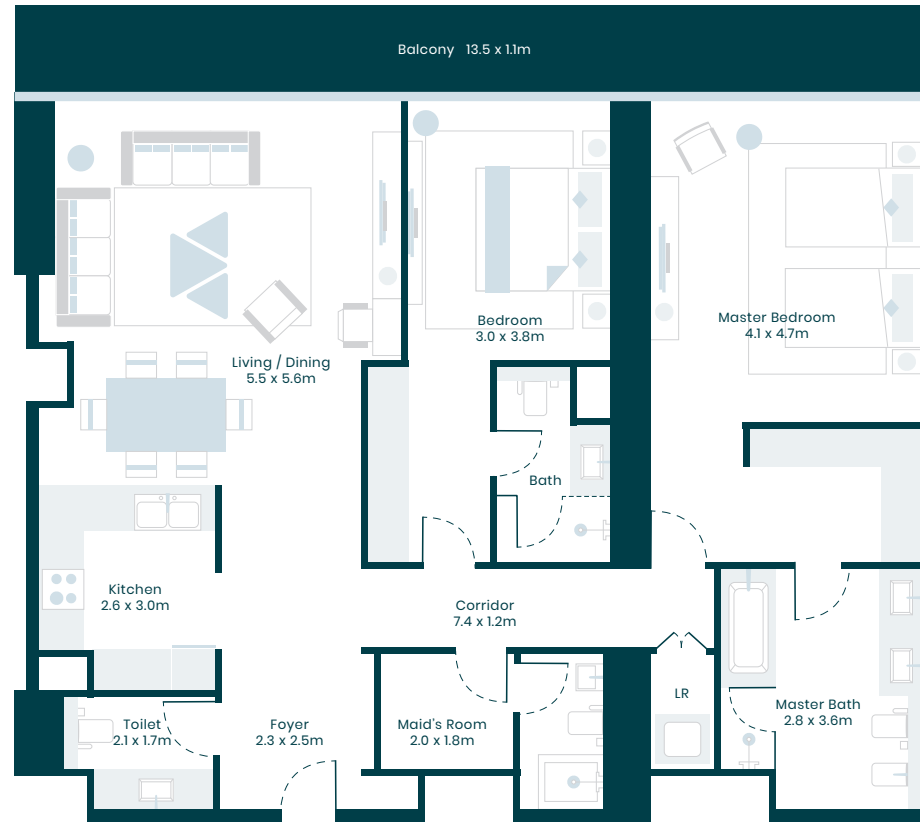
BLUEWATERS  
ISLAND



PALM  
JUMEIRAH



BURJ  
AL ARAB



EMIRATES  
GOLF COURSE

**\*Disclaimer:** (1.) All room dimensions are measured to structural elements and exclude wall finishes and construction tolerance. (2.) All dimensions have been provided by our consultant architects. (3.) All materials, dimensions & drawings are approximate. Information is subject to change without notice. (4.) Actual suite area may vary from the stated area. Drawings are not to scale. The developer reserves the right to make revisions. (5.) Calculation of suite area is measured as the area bounded by the centre line of demising wall or partition walls separating one units from another unit, the exterior face of all walls, and the exterior face of the corridor wall enclosing the adjoining unit. Calculation of balcony area is measured as the area bounded by the centre line of demising wall or partition walls separating one units from another unit, the utmost face of the enclosing guard and the external face of the unit.



# PALM VIEW



**TSR**  
— REAL ESTATE —

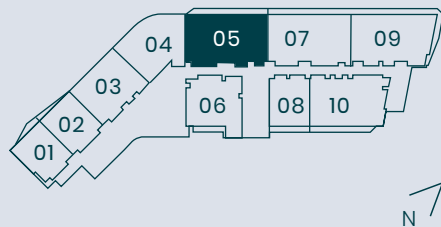


## 3 BEDROOMS

Type 3A Unit 05 Levels 22-40

	Sq.M	Sq.Ft
Suite area	189.91	2,044.17
Balcony area	19.68	211.83
Total area	209.59	2,256.01

\*Refer to sales schedule for individual specific unit areas



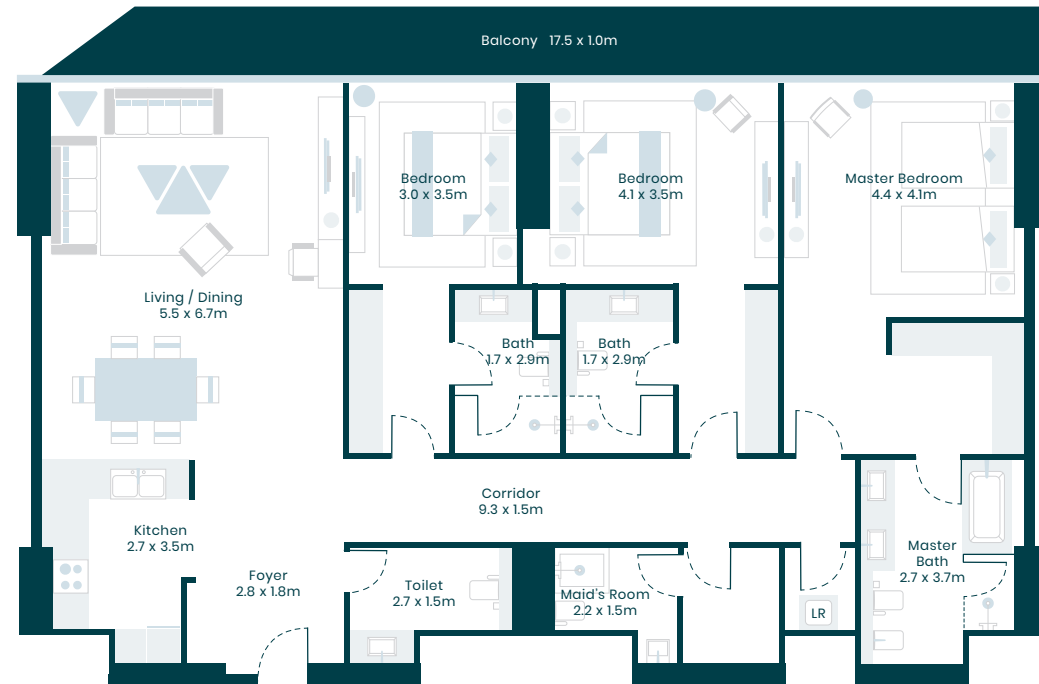
BLUEWATERS  
ISLAND



PALM  
JUMEIRAH



BURJ  
AL ARAB



EMIRATES  
GOLF COURSE

\*Disclaimer: (1.) All room dimensions are measured to structural elements and exclude wall finishes and construction tolerance. (2.) All dimensions have been provided by our consultant architects. (3.) All materials, dimensions & drawings are approximate. Information is subject to change without notice. (4.) Actual suite area may vary from the stated area. Drawings are not to scale. The developer reserves the right to make revisions. (5.) Calculation of suite area is measured as the area bounded by the centre line of demising wall or partition walls separating one units from another unit, the exterior face of all walls, and the exterior face of the corridor wall enclosing the adjoining unit. Calculation of balcony area is measured as the area bounded by the centre line of demising wall or partition walls separating one units from another unit, the utmost face of the enclosing guard and the external face of the unit.

# PALM VIEW



**TSR**

—REAL ESTATE—

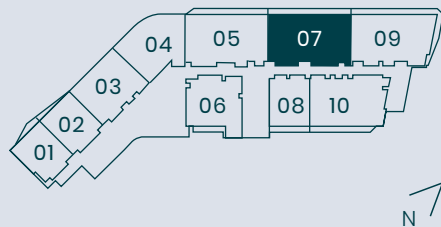


## 3 BEDROOMS

Type 3B Unit 07 Levels 22-40

	Sq.M	Sq.Ft
Suite area	191.88	2,065.38
Balcony area	20.81	224.00
Total area	212.69	2,289.38

\*Refer to sales schedule for individual specific unit areas



BLUEWATERS  
ISLAND



PALM  
JUMEIRAH



BURJ  
AL ARAB



EMIRATES  
GOLF COURSE

\*Disclaimer: (1.) All room dimensions are measured to structural elements and exclude wall finishes and construction tolerance. (2.) All dimensions have been provided by our consultant architects. (3.) All materials, dimensions & drawings are approximate. Information is subject to change without notice. (4.) Actual suite area may vary from the stated area. Drawings are not to scale. The developer reserves the right to make revisions. (5.) Calculation of suite area is measured as the area bounded by the centre line of demising wall or partition walls separating one units from another unit, the exterior face of all walls, and the exterior face of the corridor wall enclosing the adjoining unit. Calculation of balcony area is measured as the area bounded by the centre line of demising wall or partition walls separating one units from another unit, the utmost face of the enclosing guard and the external face of the unit.

# PALM VIEW



**TSR**

—REAL ESTATE—

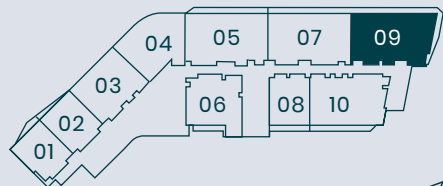


## 3 BEDROOMS

Type 3C Unit 09 Levels 22-40

	Sq.M	Sq.Ft
Suite area	181.83	1,957.20
Balcony area	20.39	219.48
Total area	202.22	2,176.68

\*Balcony area varies by floor, refer to sales schedule for individual specific balcony areas.



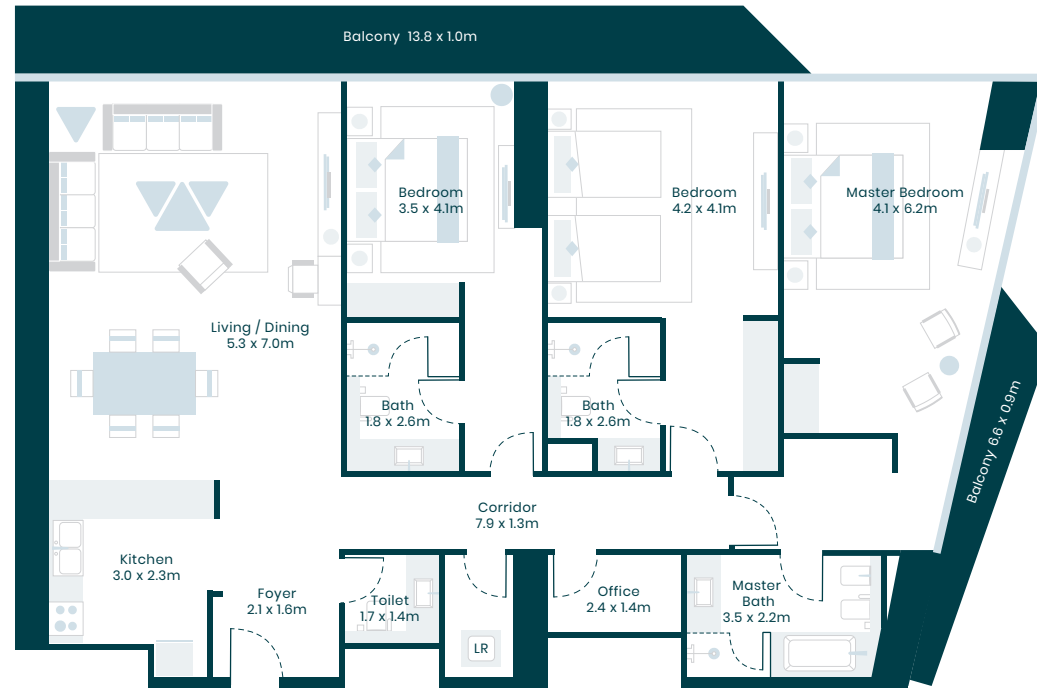
BLUEWATERS  
ISLAND



PALM  
JUMEIRAH



BURJ  
AL ARAB



EMIRATES  
GOLF COURSE

\*Disclaimer: (1.) All room dimensions are measured to structural elements and exclude wall finishes and construction tolerance. (2.) All dimensions have been provided by our consultant architects. (3.) All materials, dimensions & drawings are approximate. Information is subject to change without notice. (4.) Actual suite area may vary from the stated area. Drawings are not to scale. The developer reserves the right to make revisions. (5.) Calculation of suite area is measured as the area bounded by the centre line of demising wall or partition walls separating one units from another unit, the exterior face of all walls, and the exterior face of the corridor wall enclosing the adjoining unit. Calculation of balcony area is measured as the area bounded by the centre line of demising wall or partition walls separating one units from another unit, the utmost face of the enclosing guard and the external face of the unit.

# PALM VIEW



**TSR**

— REAL ESTATE —

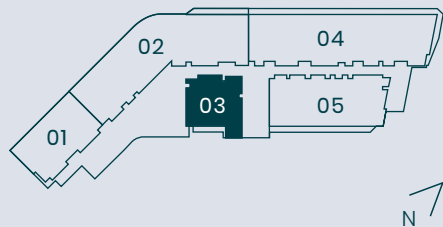


## 2 BEDROOMS

Type 2C Unit 03 Levels 41-43

	Sq.M	Sq.Ft
Suite area	134.09	1,443.33
Balcony area	8.34	89.77
Total area	142.43	1,533.10

\*Balcony area varies by floor, refer to sales schedule for individual specific balcony areas.



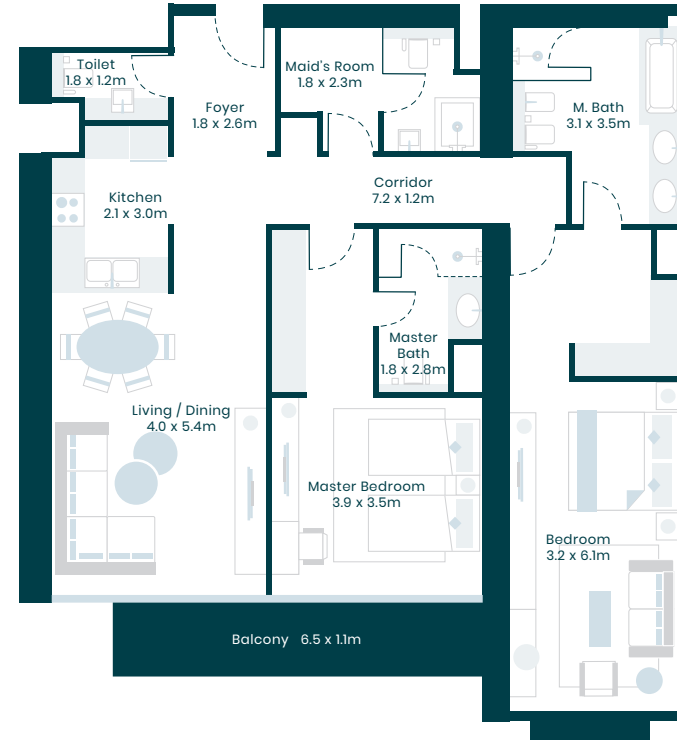
BLUEWATERS  
ISLAND



PALM  
JUMEIRAH



BURJ  
AL ARAB



EMIRATES  
GOLF COURSE

\*Disclaimer: (1.) All room dimensions are measured to structural elements and exclude wall finishes and construction tolerance. (2.) All dimensions have been provided by our consultant architects. (3.) All materials, dimensions & drawings are approximate. Information is subject to change without notice. (4.) Actual suite area may vary from the stated area. Drawings are not to scale. The developer reserves the right to make revisions. (5.) Calculation of suite area is measured as the area bounded by the centre line of demising wall or partition walls separating one units from another unit, the exterior face of all walls, and the exterior face of the corridor wall enclosing the adjoining unit. Calculation of balcony area is measured as the area bounded by the centre line of demising wall or partition walls separating one units from another unit, the utmost face of the enclosing guard and the external face of the unit.

# PALM VIEW



**TSR**

— REAL ESTATE —

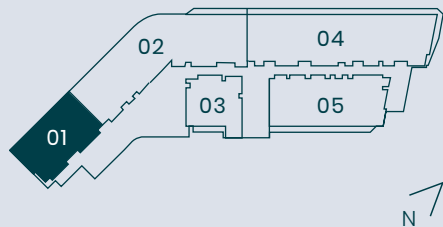


## 3 BEDROOMS

Type 3D Unit 01 Levels 41-43

	Sq.M	Sq.Ft
Suite area	190.25	2,047.83
Balcony area	0.00	0.00
Total area	190.25	2,047.83

\*Balcony area varies by floor, refer to sales schedule for individual specific balcony areas.



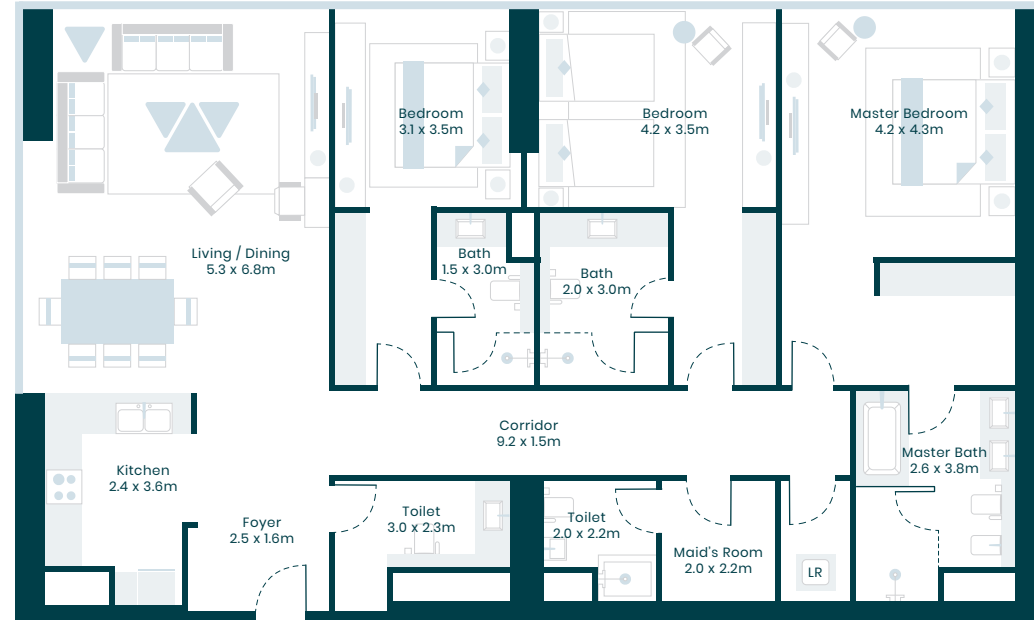
BLUEWATERS  
ISLAND



PALM  
JUMEIRAH



BURJ  
AL ARAB



EMIRATES  
GOLF COURSE

\*Disclaimer: (1.) All room dimensions are measured to structural elements and exclude wall finishes and construction tolerance. (2.) All dimensions have been provided by our consultant architects. (3.) All materials, dimensions & drawings are approximate. Information is subject to change without notice. (4.) Actual suite area may vary from the stated area. Drawings are not to scale. The developer reserves the right to make revisions. (5.) Calculation of suite area is measured as the area bounded by the centre line of demising wall or partition walls separating one units from another unit, the exterior face of all walls, and the exterior face of the corridor wall enclosing the adjoining unit. Calculation of balcony area is measured as the area bounded by the centre line of demising wall or partition walls separating one units from another unit, the utmost face of the enclosing guard and the external face of the unit.

# PALM VIEW



**TSR**

— REAL ESTATE —

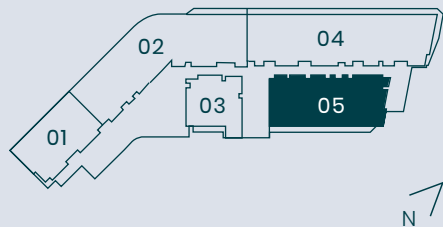


## 3 BEDROOMS

Type 3E    Unit 05    Levels 41-43

	Sq.M	Sq.Ft
Suite area	268.47	2,889.79
Balcony area	26.61	286.43
Total area	295.08	3,176.21

\*Balcony area varies by floor, refer to sales schedule for individual specific balcony areas.



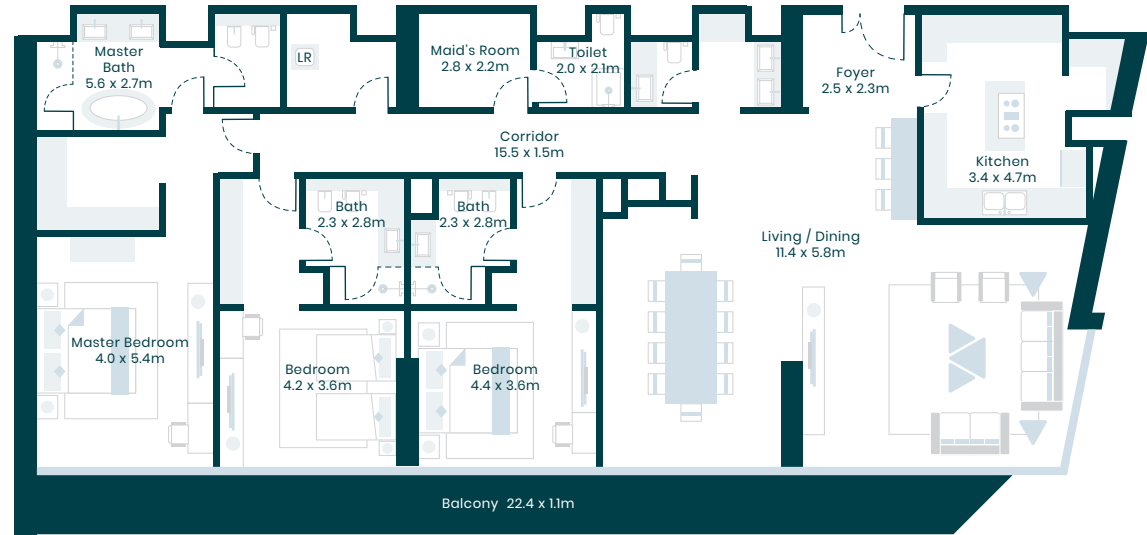
BLUEWATERS  
ISLAND



PALM  
JUMEIRAH



BURJ  
AL ARAB



EMIRATES  
GOLF COURSE

\*Disclaimer: (1.) All room dimensions are measured to structural elements and exclude wall finishes and construction tolerance. (2.) All dimensions have been provided by our consultant architects. (3.) All materials, dimensions & drawings are approximate. Information is subject to change without notice. (4.) Actual suite area may vary from the stated area. Drawings are not to scale. The developer reserves the right to make revisions. (5.) Calculation of suite area is measured as the area bounded by the centre line of demising wall or partition walls separating one units from another unit, the exterior face of all walls, and the exterior face of the corridor wall enclosing the adjoining unit. Calculation of balcony area is measured as the area bounded by the centre line of demising wall or partition walls separating one units from another unit, the utmost face of the enclosing guard and the external face of the unit.



# PALM VIEW



**TSR**

—REAL ESTATE—

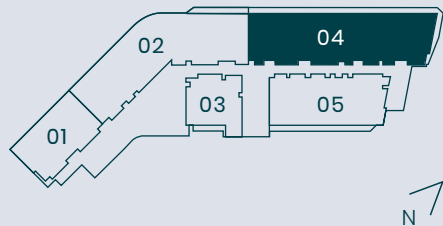


## 4 BEDROOMS

Type 4A Unit 04 Levels 41-43

	Sq.M	Sq.Ft
Suite area	421.33	4,535.15
Balcony area	58.72	632.06
Total area	480.63	5,173.46

\*Balcony area varies by floor, refer to sales schedule for individual specific balcony areas.



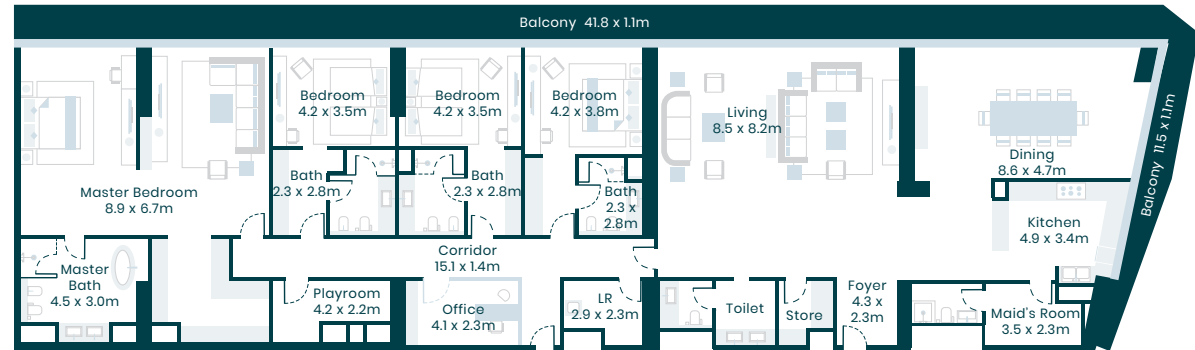
BLUEWATERS  
ISLAND



PALM  
JUMEIRAH



BURJ  
AL ARAB



\*Disclaimer: (1.) All room dimensions are measured to structural elements and exclude wall finishes and construction tolerance. (2.) All dimensions have been provided by our consultant architects. (3.) All materials, dimensions & drawings are approximate. Information is subject to change without notice. (4.) Actual suite area may vary from the stated area. Drawings are not to scale. The developer reserves the right to make revisions. (5.) Calculation of suite area is measured as the area bounded by the centre line of demising wall or partition walls separating one units from another unit, the exterior face of all walls, and the exterior face of the corridor wall enclosing the adjoining unit. Calculation of balcony area is measured as the area bounded by the centre line of demising wall or partition walls separating one units from another unit, the utmost face of the enclosing guard and the external face of the unit.

# P A L M V I E W



**TSR**

— REAL ESTATE —

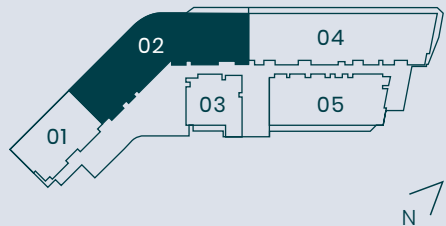


## 4 B E D R O O M S

Type 4B Unit 02 Levels 41-43

	Sq.M	Sq.Ft
Suite area	432.63	4,656.79
Balcony area	14.59	157.05
Total area	449.05	4,833.53

\*Balcony area varies by floor, refer to sales schedule for individual specific balcony areas.



BLUEWATERS  
ISLAND



PALM  
JUMEIRAH



BURJ  
AL ARAB



EMIRATES  
GOLF COURSE

\*Disclaimer: (1.) All room dimensions are measured to structural elements and exclude wall finishes and construction tolerance. (2.) All dimensions have been provided by our consultant architects. (3.) All materials, dimensions & drawings are approximate. Information is subject to change without notice. (4.) Actual suite area may vary from the stated area. Drawings are not to scale. The developer reserves the right to make revisions. (5.) Calculation of suite area is measured as the area bounded by the centre line of demising wall or partition walls separating one units from another unit, the exterior face of all walls, and the exterior face of the corridor wall enclosing the adjoining unit. Calculation of balcony area is measured as the area bounded by the centre line of demising wall or partition walls separating one units from another unit, the utmost face of the enclosing guard and the external face of the unit.



TSR

—REAL ESTATE—

For sales enquiries

+97150 373 1898, [info@tsr-realestate.com](mailto:info@tsr-realestate.com)

[tsr-realestate.com](http://tsr-realestate.com)